

Organized **283** workcamps/ hosted & sent **3,425** volunteers in 2009  
(**2,584** workcamps/ **42,037** volunteers in 19 years since 1990)

- Pop bridge between local & global communities -

# NICE Projects for 2010

- Towards a healthy & colorful world -



## M E N U

- ☺ **What is NICE?** P 2 - 3
- ☺ **Types and Definition of NICE Projects** P 4
- ☺ **More info. about International Workcamps?** P 5
- ☺ **Project 1: Short Term Workcamps** P 6 - 28
- ☺ **Project 2: LMTV (Long & Middle Term Voluntary service)** P 29-37
- ☺ **Project 3: Weekend (= Very Short Term) workcamps** P 38
- ☺ **Project 4: Group workcamps** P 39
- ☺ **Project 5: Other Projects** P 40-41

< Organizing various types of Workcamps & International Volunteering Projects >  
**NICE (Never-ending International workCamps Exchange)**

Address: 2-1-14-401 Shinjuku, Shinjuku-ku, Tokyo 160-0022 JAPAN

Tel.: 81-(0)3-3358-7140 (Mon-Fri 10:00-12:30/ 13:30-18:00) Fax: 81-(0)3-3358-7149

Web site: <http://nice1.gr.jp/>

General matters: [nice@nice1.gr.jp](mailto:nice@nice1.gr.jp) (Kai = KAIZAWA Shinichiro, President)

Incoming placement: [in@nice1.gr.jp](mailto:in@nice1.gr.jp) (Eiji = UEDA Eiji, Director)

Outgoing placement: [out@nice1.gr.jp](mailto:out@nice1.gr.jp) (Haruka = TOYONAGA Haruka)

LMTV-Incoming: [LM-in@nice1.gr.jp](mailto:LM-in@nice1.gr.jp) (Yasu = IGUCHI Yasunori)

LMTV-Outgoing: [LM-out@nice1.gr.jp](mailto:LM-out@nice1.gr.jp) (Chan = HIRASHIMA Chihiro)

Group Workcamps: [GW@nice1.gr.jp](mailto:GW@nice1.gr.jp) (Saya = YAMAGUCHI Sayaka)

Weekend workcamps: [ww@nice1.gr.jp](mailto:ww@nice1.gr.jp) (Okki = OKINO Michiko)

Western regional office: [west@nice1.gr.jp](mailto:west@nice1.gr.jp) (Tomo = ISHIGURO Tomoe)



# What is NICE!?

- \* NGO/ NPO to organize workcamps and other voluntary projects mainly in Japan
- \* General Secretary of NVDA (Asian network) and Vice President of CCIYS at UNESCO
- \* Enjoying to create a new global age by mentally young people!

## 1) Brief History;

NICE was founded on the **4th Feb. in 1990** by the 7 youth who had done the workcamps or other types of voluntary service programs abroad.

In Sep. 1990, the first international workcamp of NICE was held at the foot of the Mt. Fuji of Japan. It has been developing rapidly and variously with huge needs projects & motivations of people!

## 2) Aims and Goals;

### Achieve the Healthy & Colorful World!

We believe, **health can be a key, one of the most important values** toward the post-modern civilization. We mean not only physical health of human bodies, but also **mental, ecological, cultural, economic and communal health!**

Many people seem afraid that a low carbon society may bring us inconvenient, uncomfortable and unhappy life, but if we put more value on "health", it may not!



To **protect/ create a colorful world** is our another important goal. This means, **Diverse ecologies, cultures and personalities are harmoniously co-existed and glittered.** Potential of each actor can be more brought out with various standards!

**1) Improve the social & environmental situation by direct actions!**



**2) Empower NPOs/ local communities and raise awareness & actions!**



**3) Promote global friendship/ cooperation and personal growth!**



### 3) Activities; (see the page 4 for the way of categories)

To achieve the above aims, NICE mainly organizes the following activities;

**1A) Organize Short Term (1-6 weeks/ mostly international) Workcamps** mainly in Japan

In 2009, **106 projects** in **18 countries** with **960 full time volunteers.**

**1B) Send volunteers** from Japan to Short Term workcamps **all over the world**

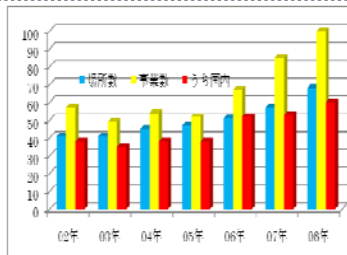
In 2009, **622 volunteers** to **53 countries**

**2) Organize LMTV (over 6 weeks) projects** mainly in Japan and **send vols. abroad**

In 2009, **29 projects** in **4 countries** with **87 vols./ sent 84 vols. to 20 countries**

**3) To organize Weekend (less than 1 week) Workcamps** in Japan

In 2009, **148 projects** in **19 prefectures** with **1,672 volunteers**

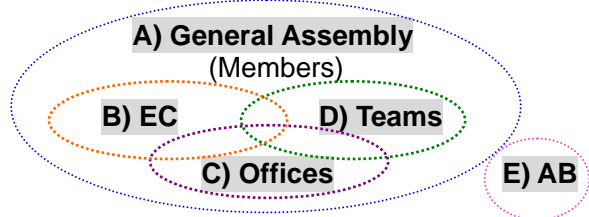


**4) Organize Group Workcamps** (in 2009, **23 projects** in **8 countries**) and

**5) Many other ecological/ social/ educational actions** such as World Tanabata Action.

Graph: Number of 1A projects in 2002-08. Blue: locations, yellow: projects in total, red: projects in Japan

### 4) Structure;



**Full members: 1,363 (76%:female, 74%:students)**

\* Over **300** of them are quite actively involved.

**Associate members: 7,946 + 8 organizations**

**A) GA** is held twice a year as the **supreme body** to approve the annual plans and reports, etc.

**B) EC (Executive Committee)** is held 6 times a year. There are **19 EC members** for 2010.

**C) Offices** (in Tokyo/ Osaka) have **10-13 full time/ paid** and **10-15 part time/ voluntary** staff in 2009.

**D) About 40 teams** organize activities (weekend workcamps, promotion, preparation of vols. etc.)

**E) AB (Advisory Board)** is held twice a year by **14 members** of the specialists & the partner NGOs.

### 5) Finance;

#### < Settlement of account in 2008 >

Income: 72,468,151 yen		Expense: 64,492,404 yen	
Project income	84%	Project: 1B	27%
Membership fee	9%	Project: 2	21%
Grant for admin.	1%	Project: 1A	20%
Donation	1%	Project: Others	12%
Others	5%	Management	20%

\* Project income consists of mainly inscription fee of vols., but also grant from the local governments/ foundations, etc., generated by each project.

\* See "3) Activities" for the category of the expense.

\* Management includes office rent, staff for it, etc.

\* This shows only the finance managed by NICE and there are much more contribution that cannot be technically/ logically included such as;

- + Local partners (meals & accommodations of vols., tools & materials for work: for Project 1A and 2)
- + Volunteers and members (Travel cost, etc.)

### 6) External Relations;

NICE has over **150 partner NGOs** in **100 countries** & over **200 local project partner NGOs** in Japan!

We are **completely independent** from any political, religious, economic power. NICE is;

**a) General Secretary of NVDA (Network for Voluntary Development in Asia)** since 2008

**b) Vice President (and the only Japanese member NGO) of CCIIVS at UNESCO** since 2007

**c) The first Asian member of ALLIANCE** of European Voluntary Service Organizations since 1996

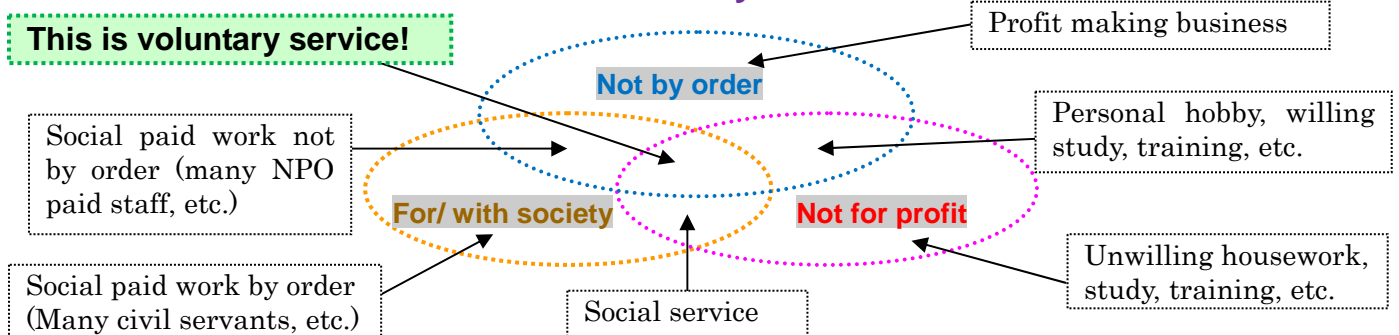
**d) Exchange partnership of SCI (Service Civil International) and YAP (Youth Action for Peace).**

We also cooperate with a lot of governments, NGO/ NPOs, media, foundations and people and are affiliated in some national networks of NGOs for advocacy, international cooperation, youth, etc.

# Types and Definition of NICE Projects

\* There are many ways to define, so these are just the case of NICE though some are quite general.

## < What is voluntary service? >



\* Actions mentioned here are just examples and not always apply to the case.

## < What are workcamps? - Categories of Voluntary Service - >

	group type (more than 2 vols.)	Individual type (1 or 2 vols.)
Living there together	<b>Workcamps!</b>	
Going to and from home		

\* Workcamps are one type of voluntary service programs doing with living together by the groups.

## < Categories of NICE projects/ Workcamps and other (i.)v.s. projects >

Length	Number of vols.	Workcamp = group type (more than 2 vols.)		Individual type (1 or 2 vols.)	
			(together)	(all together)	(together)
Very Short Term (6 days or less)		VSTW ("Weekend Workcamps")		(all together) VSTV	VSTI
Short Term (over 6 days - 6 weeks)		STW (mostly, international ones)		(all together) STV	STI
Middle Term (over 6 weeks - 6 months)		MTW	(together) LMTW	(all together) LMTV	(together) LMTI
Long Term (over 6 months or more)		LTV			LMI

\* Categories by the geographical scale (where the volunteers come from); **International** (open to any nationality)/ **Asian** (open to any Asian)/ **Trilateral** (3 countries)/ **Bilateral** (2 countries)/ **National/ Local**. Even if there are finally 2-3 nationalities while it was open to any, we still call it as "International"

\* Other ways to categorize are by **themes** (environmental, social, etc.), by nature of gathering (**group workcamps** that is **organized for the specific groups** while others are by individual applications), etc.

\* As most of international workcamps are short term, when we just call "**international workcamps**", it usually means **STW** (unless specifically mentioned like "long term (international) workcamps").

\* As most of **Very Short Term Workcamps** are done in weekends, we call them **weekend workcamps** (even for the ones organized on Mon.-Fri.)

\* LTV and MTV are usually called together (here as "LMTV" while some organizations call "MLTV").

\* NICE **rarely organizes/ introduces individual type of very short term or short term** ones (SSTI, STI) while quite many of LMTV projects are individual type (LMTI).

# More info. about International Workcamps!

**International voluntary service projects where volunteers from all over the world live & work together with local people. Mostly for 2-3 weeks/ in Jul.-Sep. by 5-20 volunteers.**

## 1) Brief History;

In **1920**, the first one started in **France** mainly by German and French youth as reconstructing the farms destroyed during the World War I. Since then, it has been spreading to all over the world. In the 60s, many workcamps with construction works were organized in newly independent countries as well as peace projects between East & West of Europe. Environmental ones have been increasing since 80s. According to our research, over **3,000 projects in about 100 countries** are held in a year.

## 2) Common Aims and Voluntary Works;

Although each WOs and workcamps have their own aims, the common aim is to achieve peaceful, healthy, just and sustainable world by

- a) **Creating/ supporting voluntary movements for ecology, human rights, self-sufficiency, etc.**
- b) **Activating and involving new people to local communities and NGO/NPOs**
- c) **Promoting global understanding, friendship and solidarity**

Work is normally for 5-8 hours a day & 4-6 days a week. The types are varied (depend on the needs);

- a) **Environment:** Cleaning rivers, planting trees, protecting animals, creating eco-villages, etc.
- b) **Agriculture:** Picking fruits or seeding in organic farms, reviving uncultivated fields, etc.
- c) **Construction :** schools, toilets, renovating castles, converting farms into youth centers, etc.
- d) **Social work:** With/ for children, refugees, mentally/ physically disadvantaged, elders, etc.
- e) **Arts/Education:** Organizing festivals, performing play against AIDS in schools, archaeology, etc.
- f) **Others:** Making proposals of town planning, recycling & sending bicycles to India, etc.

## 3) Accommodations & Free time activities;

Usually **youth centers, public halls, schools** and sometimes tents or temples that are simple but even better for the group life! Volunteers often **cook by turns** and enjoy global tastes.

The common language is **English** in most of workcamps though you had better to try **local languages**.

In some workcamps, the hosts or volunteers organize discussions, excursions, and exchange parties with local people, school visit, sports programs, etc. It is very important to note that **workcamps should be made by all volunteers with local people**. Volunteers are not guests!

## 4) Workcamp Organizations (WOs);

WOs are international voluntary service **NGOs/NPOs** (Non-Governmental/ Non-Profit Organizations), most of which are affiliated in the international networks such as **CCIVS** (Coordinating Committee for International Voluntary Service) founded by **UNESCO**, **NVDA** (Network for Voluntary Development in Asia) and **ALLIANCE** of European Voluntary Service Organizations.

Some are specialized for the specific areas and each WO **independently & freely** organizes projects mainly **in their own countries** with local governments or NGO/NPOs and cooperates with other WOs abroad. They are **organized locally, coordinated nationally and exchanged internationally!**

## 5) Finance;

Many WOs are managed by the **inscription fee from volunteers** but some are supported also by the **governments, foundations, etc.** **Volunteers need to pay the travel cost** to/ from the projects and the fee to WOs in their own countries. **Meals & accommodations are normally provided** by local partners while there are participation fee of **100-300 US\$** in most of the projects of **Africa, Asia and L. America**.

# Project 1: Short Term Workcamps

## (Between 7 days and 6 weeks)

### 1-1) Introduction;

We welcome you to join our workcamps, **sharing happy time and creating fresh new age together!** All campsites have nice nature and warm people, so you will discover colorful and vigorous figures of Japan and others that is completely different from typical images you may have through media.

< **The common points** of all projects (unless mentioned in each description of the detailed info.) >

a) Age limit	From <b>18 (No maximum)</b> . In some projects, we can accept children with their families or also a bit younger volunteers (aged 16-17).
b) Language	<b>English</b> (but we also welcome you to try Japanese/ other local languages!)
c) Insurance	We provide small insurance <b>only for accidents during the projects IN JAPAN.</b>
d) Accommodations	Mostly, there are showers, kitchens and toilets. Basic, but enjoyable enough.

### 1-2) How to apply and join the projects!?

#### **Step 1: Send application: through the partners!!**

Non-Japanese volunteers living outside Japan need to apply **through our partner NGOs** of their countries (if your country is in Asia-Pacific and has no such NGOs, then you need to apply through **NVDA** (Network for Voluntary Development in Asia) <http://www.nvda-asiapacific.org/>).

Only if you are Japanese or live in Japan for a year or more, you can apply to NICE directly. Ask [in@nice1.gr.jp](mailto:in@nice1.gr.jp) for more info., then we will send you the guidance (procedure, fee, etc.) and the form.

#### **< How much should volunteers pay? >**

**Volunteers need to pay the travel cost** to/ from the workcamps & the following **Registration fee** to NICE while **meals and accommodation during the projects are provided** by NICE & the local partners:

- |   |
|---|
| a) From the NGOs charging <b>no fee</b> in their Short Term Workcamps <b>to NICE vols./ NVDA: No fee</b>  |
| b) From the NGOs charging <b>some fee</b> in their Short Term Workcamps to NICE vols: <b>Some fee (+)</b> |

+ This depends on the agreement with each partner. We usually charge the same amount as they do while we can consider discount/ exemption for the partners in “less expensive” (developing) countries.

\* There is also a **participation fee** in some projects outside Japan (mentioned in each project description)

#### **Step 2: Phone Interview (only for some workcamps)**

If you apply for the workcamp which requires **speaking GOOD Japanese**, you will need to call the **NICE office** to have phone interview. Calling date/ time and the phone number will be informed by NICE to your sending NGO right after NICE will have received your application form.

#### **Step 3: Acceptance**

NICE will inform your sending NGO whether you can be accepted or not by e-mail (Acceptance Letter and NICE Volunteers' Guide will be also sent if you are accepted), usually in **3-5 days**.

#### **Step4: Book the flights as soon as being accepted and do other preparation!**

**Don't wait** for the Information Sheets, otherwise you may miss economical flights!

In all the workcamps in Japan, volunteers will meet at the accommodations or the stations nearby, usually **in the afternoon of the first day** and usually finish **around the noon of the last day**. Some projects are located quite **far from the airports** and it takes a long time by cheap ways.

So, we advise volunteers to arrive at/ leave Japan (hosting country) **at least one day before/ after** the projects. And volunteers should not expect so much time for sightseeing during the projects, so if you want to do it, please take enough time before/ after the workcamps!

And it is **quite possible to stay in the houses** of Japanese volunteers in the same workcamps or of other NICE members before/ after the workcamps! (For the details, wait for the Information Sheets!)

You can do any other preparation such as studying Japanese language/ culture/ history, etc. About visa for Japan, see the page 15 and also please check it by yourself/ with your sending NGO.

## **Step 5: The detailed information of the project**

By **1 month before** the project will start, volunteers will receive "Information Sheets" (details of the project, what to bring, the meeting point, how to get there, etc.).

## **Step 6: Joining the project!**

You will stay and work with other volunteers and the local hosts. Have a fruitful stay!

### **< To join Short Term Workcamps all over the world > (organized by the partner NGOs)**

#### **1) Where and When organized?**

NICE introduces about **3,000 workcamps** in **100 countries** organized by the **partner NGOs**. The projects are held **all through the year** (Majority is Jun.-Sep.).

#### **2) Who can apply (through NICE)?**

**Japanese** citizen or other citizens who are **living in Japan for a long time (for a year or more)**. If you are **NOT** in the above criteria, you need to apply **through our partner NGO in your country**.

\* If your country is in Asia-Pacific and has no such NGOs, then you need to apply through **NVDA** (Network for Voluntary Development in Asia) <http://www.nvda-asiapacific.org/>

#### **3) How can I apply and how much should I pay?**

Ask [out@nice1.gr.jp](mailto:out@nice1.gr.jp) for more info., then we will send you the guidance and the form.

### **1-3) Summery List**

Vols. = Number of INTERNATIONAL volunteers to be recruited (there will be some more from Japan & locals).

# means that international volunteers will be recruited through our co-organizers in the project countries.

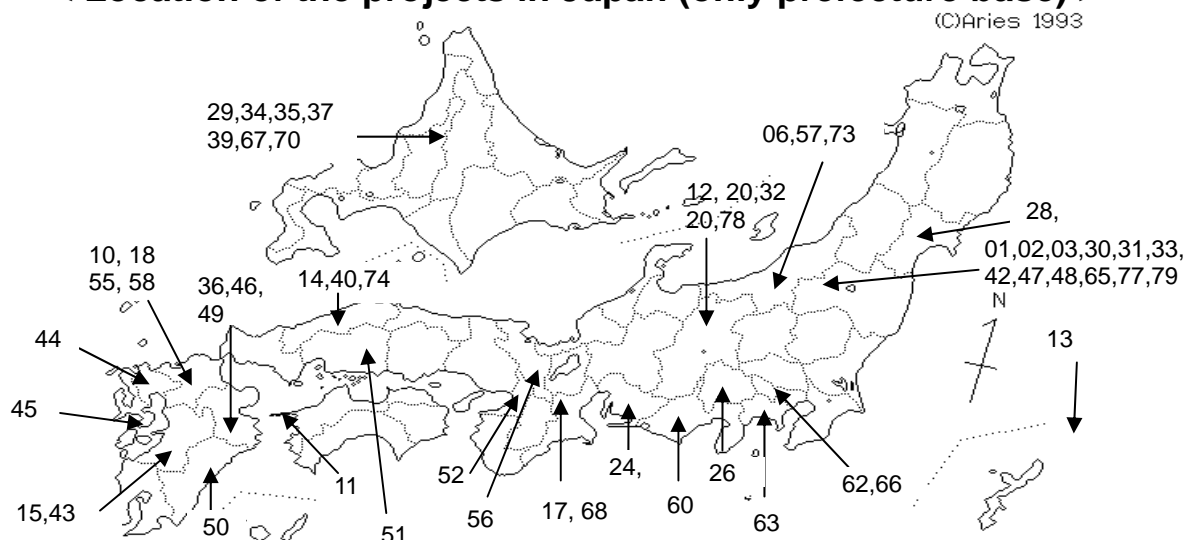
HMT = How many times the project has been organized (NEW! means the first time).

Code	Name	Location	Dates	Types	Vols.	HMT
NICE/01	Kaneyama	Fukushima	03/01-10/01	CONS, ELDE	5	<b>New!</b>
NICE/02	Showa-mura 1	Fukushima	25/01-07/02	CONS, ELDE	2	9 <sup>th</sup>
NICE/03	Showa-mura 2	Fukushima	08/02-22/02	CONS, ELDE	2	10 <sup>th</sup>
NICE-KNCU/04	Van Vieng	* Laos	15/02-28/02	CONS, KIDS	-	2 <sup>nd</sup>
NICE-MCE/05	Bilateral 1	* Mongolia	15/02-28/02	KIDS, SOCI, EDUC	-	54 <sup>th</sup>
NICE-UVI/25	Kilimanjaro	* Tanzania	15/02-28/02	ENVI	-	<b>New!</b>
NICE/06	Uonuma	Niigata	20/02-01/03	ENVI, KIDS	3	<b>New!</b>
NICE-SF/07	Sadhana Forest	* India	21/02-06/03	ENVI	-	6 <sup>th</sup>
NICE/08	Rh. Dagan 1	* Malaysia	24/02-07/03	CONS	-	3 <sup>rd</sup>
NICE-IIWC/09	Tegalrejo 1	* Indonesia	24/02-09/03	KIDS, SOCI	-	3 <sup>rd</sup>
NICE/10	Kurogi	Fukuoka	24/02-15/03	ENVI	6	<b>New!</b>
NICE/11	Ikata	Ehime	01/03-14/03	AGRI	4	3 <sup>rd</sup>
NICE/12	Maki 1	Nagano	02/03-10/03	CONS	3	17 <sup>th</sup>
NICE/13	Erabu	Kagoshima	03/03-23/03	AGRI	1	23 <sup>rd</sup>
NICE/14	Iwami-Ginzan	Shimane	05/03-15/03	ENVI	4	5 <sup>th</sup>
NICE-IIWC/23	Tegalrejo	* Indonesia	11/03-29/03	KIDS	-	<b>New!</b>
NICE/15	Minamata	Kumamoto	13/03-28/03	ENVI	8	19 <sup>th</sup>
NICE-UPA/16	Masaka 1	* Uganda	15/03-29/03	KIDS, SOCI, CONS	5#	4 <sup>th</sup>
NICE/17	Nabari	Mie	17/03-31/03	ENVI	5	21 <sup>st</sup>
NICE/28	Kurikoma	Miyagi	17/03-23/03	ENVI	-	6 <sup>th</sup>
NICE/18	Asakura-Haki	Fukuoka	18/03-30/03	ARTS, EDUC	5	6 <sup>th</sup>
NICE/26	Kurobera	Yamanashi	20/03-28/03	ENVI	-	2 <sup>nd</sup>
NICE-HKIEd/24	Nagakute	Aichi	30/03-11/04	ENVI, ELDE	-	3 <sup>rd</sup>

NICE-MCE/19	Greening Mongolia	* Mongolia	25/04-08/05	ENVI	5#	55 <sup>th</sup>
NICE/29	Hakkenzan 1	Hokkaido	09/05-22/05	ENVI	3	<b>New!</b>
NICE/20	Maki 2	Nagano	23/06-06/07	AGRI	4	18 <sup>th</sup>
NICE/30	Aizu	Fukushima	09/07-02/08	AGRI, KIDS	2	<b>New!</b>
NICE/31	Showa-mura 3	Fukushima	12/07-25/07	AGRI	5	10 <sup>th</sup>
NICE/32	Yasuoka	Nagano	19/07-31/08	KIDS	2	4 <sup>th</sup>
NICE/33	Abukuma	Fukushima	20/07-06/08	KIDS	3	<b>New!</b>
NICE/34	Kuromatsunai	Hokkaido	20/07-16/08	KIDS	3	9 <sup>th</sup>
NICE/35	Hakkenzan 2	Hokkaido	20/07-20/08	EDU, ENVI, AGRI	2	2 <sup>nd</sup>
NICE/36	Kodomo-mura 1	Oita	21/07-08/08	KIDS	5	19 <sup>th</sup>
NICE/37	Onuma	Hokkaido	23/07-30/07	ENVI	3	8 <sup>th</sup>
NICE-IJGD/38	Gohrde	* Germany	24/07-13/08	ENVI,RENO	-	<b>New!</b>
NICE/39	Naganuma	Hokkaido	26/07-08/08	ENVI	4	<b>New!</b>
NICE/40	Un-nan	Shimane	27/07-06/08	AGRI, FEST	6	5 <sup>th</sup>
NICE-VYA/41	Taishi 3	* Taiwan	27/07-10/08	ARTS, CONS	5#	7 <sup>th</sup>
NICE/42	Showa-mura 4	Fukushima	28/07-11/08	AGRI	5	11 <sup>th</sup>
NICE/43	Namino	Kumamoto	31/07-16/08	AGRI, FEST, KIDS	6	12 <sup>th</sup>
NICE/44	Saga	Saga	01/08-13/08	KIDS	4	4 <sup>th</sup>
NICE/45	Unzen	Nagasaki	01/08-13/08	KIDS, ENVI, ELDE	6	17th
NICE/46	Ogata	Oita	01/08-16/08	AGRI, FEST, KIDS	5	8th
NICE/47	Aizu 2	Fukushima	03/08-17/08	KIDS	2	2 <sup>nd</sup>
NICE/48	Hanawa	Fukushima	03/08-18/08	FEST	8	17 <sup>th</sup>
NICE/49	Kodomo-mura 2	Oita	06/08-23/08	KIDS	6	20 <sup>th</sup>
NICE/50	Shiba-son	Miyazaki	07/08-16/08	ENVI	5	2 <sup>nd</sup>
NICE/51	Miyoshi	Hiroshima	07/08-16/08	AGRI, FEST	6	<b>New!</b>
NICE/52	Taishi-Tonda	Osaka	07/08-20/08	ENVI	5	12 <sup>th</sup>
NICE-IJGD/53	Harz	* Germany	07/08-28/08	ENVI	-	<b>New!</b>
NICE-IIWC/54	Tegalrejo 2	* Indonesia	09/08-19/08	KIDS, SOCI	-	4 <sup>th</sup>
NICE/55	Kitakyushu	Fukuoka	10/08-23/08	KIDS	5	4 <sup>th</sup>
NICE/56	Wazuka	Kyoto	10/08-25/08	AGRI, CONS	7	11th
NICE/57	Ogi	Nigata	13/08-01/09	ENVI, FEST	3	11th
NICE/58	Hoshino	Fukuoka	14/08-26/08	ENVI, KIDS, EDUC	5	12th
NICE/59	Julau 1	* Malaysia	15/08-28/08	CONS	5	16th
NICE/60	Fuji	Shizuoka	15/08-28/08	ENVI	10	6 <sup>th</sup>
NICE-ALT/61	Pereyaslav-K	* Ukraine	15/08-29/08	RENO	-	<b>New!</b>
NICE/62	Hinode	Tokyo	16/08-30/08	DISA, ENVI	5	22 <sup>nd</sup>
NICE/63	Kamakura	Kanagawa	22/08-31/08	KIDS, SOCI	3	7 <sup>th</sup>
NICE/64	Julau 2	* Malaysia	29/08-11/09	CONS	5	17th
NICE/65	Showa-mura 5	Fukushima	30/08-12/09	AGRI	5	12 <sup>th</sup>
NICE/66	Tokyo-ko	Tokyo	31/08-14/09	ENVI	6	12th
NICE/67	Shintoku	Hokkaido	01/09-14/09	AGRI, ENVI, CONS	4	13th
NICE/68	Nabari 2	Mie	01/09-15/09	ENVI	5	22nd
NICE/81	SSP	* Bangladesh	??/09-??/09	EDUC	-	8th
NICE-UNA/69	Afan Forerst	* UK	04/09-18/09	ENVI	-	4th
NICE/70	Onuma 2	Hokkaido	05/09-19/09	ENVI	6	9 <sup>th</sup>
NICE-UPA/71	Masaka 2	* Uganda	05/09-19/09	KIDS, SOCI, CONS	6#	5 <sup>th</sup>
NICE/72	Rh. Dagan 1	* Malaysia	06/09-19/09	CONS	-	4 <sup>th</sup>
NICE/73	Minami-Uonuma	Niigata	08/09-19/09	ENVI, KIDS, EDUC	5	16th
NICE/82	Katsuyama	Fukui	10/09-23/09	MANU, AGRI, ENVI	5	2 <sup>nd</sup>
NICE/74	Iwami-Ginzan	Shimane	11/09-25/09	ENVI	4	6 <sup>th</sup>
NICE-MCE/75	Bilateral 3	* Mongolia	13/09-26/09	AGRI, EDUC, KIDS	-	56th
NICE-MCE/76	Bilateral 4	* Mongolia	17/09-30/09	AGRI, EDUC, KIDS	-	57th
NICE/77	Showa-mura 6	Fukushima	21/09-05/10	AGRI	5	13 <sup>th</sup>
NICE/78	Maki 3	Nagano	13/10-26/10	AGRI	4	16th
NICE/79	Showa-mura 7	Fukushima	14/10-28/10	AGRI	5	14 <sup>th</sup>

\* There will be more & more projects organized in 2010 that will be informed to the partner NGOs later!

## < Location of the projects in Japan (only prefecture base) >



### 1-4) General Qualification;

- a) **Best motivation for the voluntary work** (special good skills and power are not necessary)
- b) **Responsibility to keep rules** of NICE & the partners and **cooperation** to run the workcamps
- c) **Best efforts to understand and respect cultures** both of the hosts and other volunteers
- d) **Open mind to make friends** with trying to speak English (in the groups) and the local language
- e) **To adapt and enjoy simple conditions** of the living such as food and accommodation

Though it'd be very funny and dramatic time for you, if your motivation is **only for enjoying holidays, please don't apply** and do just travel. If it is more **for voluntary service** to make a better world and **friendship** with local people and other volunteers, you are **super welcome!!**

### 1-5) Detailed Workcamps Information;

After the **backgrounds** (partners, aims and histories) of the workcamps;

<b>W</b> : Voluntary work	<b>T</b> : Terminal (The closest big international airport)
<b>S</b> : Study theme	<b>LA</b> : Leisure Activities
<b>A</b> : Accommodation	<b>SR</b> : Special Remarks (if any)
<b>L</b> : Location	<b>PF</b> : Participation Fees (if any)

\* For Accommodation, **CV** = Cooked by Volunteers, **MP** = Meals are Provided.  
**SB!** = Sleeping Bag is necessary, **SBN** = Sleeping Bag is Not necessary

## < International workcamps (open to any nationalities!) >

### **NICE/01 Kaneyama (Fukushima) 03/01-10/01 CONS, ELDE 10 vols. (5 int.)**

Newly (in this place) organized together with **Terakoya-Hojyosha (TH)**. TH runs an alternative school where they host the children who could not go to the formal schools because of many different reasons. In this area, there has been depopulation, especially a decrease in children and a significant ageing population. The goal of this workcamp is to energize and engage the community through the power of global voluntary service as well as empowering and promoting global education to the children.

**W:** We will construct of slider and amazing square by snow for Kids and family in the ski area. TH run winter nature Kids activities, so Kids will enjoy this slider and amazing square. We **remove snow of the elder's houses**. We will work get training and work with the local volunteers.

**S:** Organizing nature activities. Please bring some information of nature school in your country.

**A:** Building in abandoned school. SB! CV

**L:** **A small town in forest area**, the population is about 18,000. There is a hot spring in the village.

**T:** Tokyo (5 hours from Tokyo by bus)

**LA:** Exchange parties, ski, etc.

**SR:** Interest in **rural area and the project** of the workcamp

**NICE/02 Showa-mura 1 (Fukushima) 25/01-07/02 CONS, ELDE 3 vols. (2 int.)**

Organized together with **Choma-Club (CC)** since 2008. CC is a local NPO to organize a lot of projects for community development and youth-empowerment. Showa-mura is a rural village surrounded by the abundant nature and has been facing serious **depopulation problems**. The **numbers of vacant houses and abandoned farms have** been rapidly increasing. So, CC has been trying to restore and animate the community.

**W:** We will **remove snow of the elder's houses in the mountain area**. Over 50 percent of the villagers are people aged 65 or older, they do not have enough physical strength that does it. We will work get training and work with the local volunteers.

**S:** Nature-orientated activities and nature schools in your country. **Bring** some info.!

**A:** The abandoned house, it is a historically valuable for volunteers. CV

**L:** **Small village in the forested area**, the population is about 19,000. There is a hot spring.

**T:** Tokyo (5 hours from Tokyo by bus)

**LA:** Excursions, exchange parties, etc.

**SR:** **Very good Japanese language (there will be phone interview)**. Workcamp language will be JAPANESE! Vols. need to be **physically strong**.

**NICE/03 Showa-mura 2 (Fukushima) 08/02-22/02 CONS, ELDE 3 vols. (2 int.)**

Same as NICE/02

**NICE/06 Uonuma (Niigata) 20/02-01/03 ENVI, KIDS 6 vols. (3 int.)**

Newly organized together with **Uonuma-Denshukan**. Fukuyama is a rural village surrounded by an abundance of nature and has been facing serious **depopulation problems**. Moreover, it is heavy snowfall area and usually there is more than 2 meters of snow on the ground in winter. Uonuma-Denshukan has been trying to energize the area and also runs various kinds of ecological education programs mainly for kids to let them know the rich nature of Fukuyama.

**W:** We will help **removing the heavy snowfall from roofs of the house** where elderly people are living alone. The labor will be **physically hard**. We will do a variety of activities with the local community, especially on weekend working with **kids** from the town and **help together with kids all the time**.

**S:** Effective cases to activate depopulated areas in each country. **Bring** some info.!

**A:** The abandoned school buildings. SB! CV

**L:** Mountainous, agricultural town about 170 km north of Tokyo. Famous for the best **sake** and rice! Very cold in winter!!!

**T:** Tokyo (3 hours by bullet train or 5 hours by slow train)

**LA:** Exchange parties and excursion etc.

**SR:** **High motivation to work hard and enjoy simple life in the isolated area and respect to the local culture and way of the local organization! Very good Japanese language (there will be phone interview)**. Workcamp language will be JAPANESE!

**NICE/10 Kurogi (Fukushima) 24/02-15/03 ENVI 6 vols. (3 int.)**

Organized together with Sanson-Juku (SJ) since 2008 (but first time for the short term with NICE). SJ maintain the **forest and rice fields by the exchange programs between cities and the country side**. In spite of the town's natural heritage, depopulation (especially of youth) is a serious problem here similarly to many other parts of the country side in Japan. We aim to help with nature conservation and to activate the area through workcamps.

**W:** We will **work in the forests doing activities such as hiking and cutting bushes** in maintenance of the forest by which we can contribute to nature conservation through global voluntary power. We will repair traditional stone rice fields.

**S:** Effective cases of activated depopulated areas in each country. **Bring** some info..!

**A:** Building in abandoned school. CV

**L:** Southern part of the Fukuoka prefecture. The Kurogi town is 135,49 km<sup>2</sup>. There are so many tee trees and terraced paddy fields.

**T:** Fukuoka airport (3 hours by express train). From Tokyo to Fukuoka airport, 1.5 hours by airplane or from Tokyo to Hakata station, 5.5 hours by Shinkansen.

**SR:** **Interest in nature protection & exchange with a community**. Adaptability to enjoy a **simple lifestyle!**

**NICE/11 Ikata (Ehime) 01/03-14/03 AGRI 6vols. (4 int.)**

Organized together with a local group, **Kikuya**, since 2008. Kikuya is a Community Group formed by local young people to think of the future of their small village. Ikata town is famous for oranges that are the main industry there. But the town has been facing the depopulation, lack of workers since most of young people leave the town. Number of abandoned orange farms is increasing and the town is losing traditions and customs. They want to work with volunteer to animate the town and revive orange farms.

**W:** We will be divided 2-3 persons and work with farmers in each orange farm, mainly **harvesting and take care of orange trees** that is not rely on agrichemical and chemical manure. So, it is good for health and nature. We will also clean up the town and find good site points of this town.

**S:** Rural development. Bring some info.!

**A:** Volunteers house in the town. SB! CV

**L:** About 350 km northwest of Osaka. Sata Peninsula in Ehime prefecture.

**T:** Osaka (8hours by bus and train). From Tokyo, 8 hours by bullet train or 14 hours by midnight bus.

**SR:** Some Japanese language

### **NICE/12 Maki 1 (Nagano) 03/02-10/03 CONS 8 vols. (3 int.)**

Organized together with **Maki Farm of Kyodo Gakusha (KG)** since 2000. KG is a NPO running 5 **organic farming communities in Japan** where people with various backgrounds such as mentally disadvantaged, those who want to learn farming, etc. in order to change our society from competitive to cooperative. Maki Farm has 5-10 members and is located in a very isolated area (not accessible for cars and we have to walk 4 km in the mountains), so once it became **an abandon village in 1970s**.

**W:** We will mainly **clear the snow of their buildings and carry the fire woods** by using sledges. We will also take care of goats and chicken and also **carry the things from the town, help their house works, etc.** Be ready to work for quite a long time (**05:30-18:00** with some brakes) and **hard**.

**S:** Similar type of communities in each country and their networking. **Bring** some info.!

**A:** Building for volunteers in the farm. CV. SB! There are some gas, electricity and water!

**L:** Very isolated, but beautiful place near "Japanese Northern Alps". About 900 meters asl. There are something remained here that most of Japanese areas have lost in modernization.

**T:** From Tokyo, 4 hours by express train or 8-10 hours by bus and train.

**LA:** Visit to the elementary school, foot ball and baseball (optional), exchange party, etc.

**SR:** **Good Japanese language.** Workcamp language will be JAPANESE! You need to be **physically strong and flexible to respect the way of the local host. Motivation letter is needed!**

### **BE CAREFUL!! Farm-stay program requiring Japanese language!!**

#### **NICE/13 Erabu (Kagoshima) 03/03-23/03 AGRI 7 vols. (0-1 int.)**

Organized together **with some farmers** since 1995. Feb.-Mar. is the **busiest period for flower farming**, the main industry of the island. So, they face the shortage of even temporary paid workers and we volunteers will support them! This is **NOT a typical workcamp, BUT rather a farm-stay program** except the last five days on which the volunteers **stay and do some activities together** such as cleaning the beach and visiting elders home.

**W:** We will be divided into 2-3 persons and work with farmers in each farms, mainly **harvest and shipment of chrysanthemum**. It will be not so physically hard but for long hours sometimes even in the night with same type of simple works, so **your motivation is very important!!**

**S:** Future plan of the island. **Bring** some info.!

**A:** Each farm. SBN. MP but you may need to help.

**L:** 536 km south of Kagoshima. Nice nature, culture and people, not polluted by tourism. Quite warm (average in a day is 20 degree in winter). One of the safest places in the world!?

**T:** Naha (6 hours by ship). From Tokyo, it takes 3 days by the slow train and ship for the cheapest way.

**LA:** Sports with local youth, excursion, exchange parties, etc.

**SR:** **Very good Japanese language (there will be phone interview).** Workcamp language will be JAPANESE! High motivation to help farming. Vols. can get some pocket money.

#### **NICE/14 Iwami Ginzan 1 (Shimane) 05/03-15/03 ENVI 8 vols. (4 int.)**

Organized together with the '**Organization of Green and Water**' (OGW) since 2007. OGW was established in 1992 to advocate for the importance of the prairie and forest in our ecosystem. They work around Iwami Ginzan, a silver mine, which was registered as a World Heritage site in 2007. The organization wants to care for the forests and prairies. It is important to continue to care for our forests after we have disrupted the ecosystem.

**W:** We will do a variety work to maintain and protect the forests such as **cutting bamboo and grasses, burning grasses, etc...** Extending bamboo forest is serious problem in Japan. It will be physically

challenging. Part of the **Greening Asia** project.

**S:** Similar kinds of activities of forest care and protection in each country. **Bring** some info.!

**A:** National Sanbe youth's house. SBN MP

**L:** About 250 km northwest of Osaka. Near the Sea of Japan

**T:** Osaka (9 hours by train). From Tokyo, 6 hours by bullet train or 12 hours by midnight bus.

**LA:** Visiting school, exchange parties, home stay.

**SR:** Interested in nature conservation

### **NICE/15 Minamata (Kumamoto) 13/03-28/03 ENVI 14 vols. (7 int.)**

Organized together with **Minamata International Friendship Association (MIFA)** since 1992. Though there was a big tragedy of public pollution 40 years ago, **it's completely safe now** and Minamata is pioneering to be ecological town by distinguishing garbage into 21 categories, etc. The workcamps have been creating **a forest on the reclaimed land to bear new lives as a symbol of revival**, with strong wish of the patients as well as doing various community works to activate local communities.

**W:** We will mainly work for **"marine project" such as cleaning the beaches and helping to research the living in the wet land**. We may also maintain the workcamp forest by transplanting the seedlings, etc. and probably also do some farm work and World Tanabata Action.

**S:** Future plan of Minamata and Greening Asia. **Bring** some info.!

**A:** Public hall (we will borrow the bathrooms of neighbors that creates nice exchange). SB! CV.

**L:** South west in Kyushu island. People are cheerful and many of man like to drink sake!! If lucky, you could enjoy parties under cherry flowers!

**T:** Fukuoka (3 hours by train). From Osaka, 6 hours by bullet train or 12 hours by midnight bus.

**LA:** Home stay, exchange parties, elementary school visit, etc.

**SR:** Interest to **protect nature and to exchange with people**.

## **Applications for international volunteers should be sent to UPA!!**

### **NICE-UPA/16 Masaka 1 (\* Uganda) 15/03-29/03 KIDS, SOCI, CONS 15 vols. (5 int.)**

Organized together with **COTFONE** (Community Transformation Foundation Network) and **UPA** (Uganda Pioneer Association) since 2008. COTFONE, established in 2003, runs Children Center to **provide education for 90 orphans** aged 4-10. It is registered by Masaka prefecture government and run by 3 staff members and other local vols. A member of NICE working in this NGO as a JICA (Japan International Cooperation Agency) volunteer for 2 years have proposed this project.

**W:** We will mainly construct a classroom of the centre by correcting water, sand, bricks and making cements. We will also organize games, sports and drawing with the children as well as conduct educational programs for youth to prevent HIV/ AIDS. Your creative ideas are welcomed!

**S:** Situation of orphans in both countries and possible future cooperation. **Bring** some info.!

**A:** Some rooms of the COTFONE Children Center. SB! CV

**L:** Bukoto-South district, 4 hours by bus from Kampala

**T:** Entebe international airport (you need to arrive by the 16th night and can leave in the 30th morning)

**LA:** Visits to Orphans' home, health centre, local markets, holy stones landmark, etc.

**SR:** Those who like kids and can respect local cultures/ ways. Construction skill is welcome! For more info. and applications, **please contact with UPA: [uganda\\_pioneers22@hotmail.com](mailto:uganda_pioneers22@hotmail.com)**

**PF:** **180 Euro** to be paid on your arrivals (20 Euro more if you want to be picked up at the airport).

### **NICE/17 Nabari 1 (Mie) 17/03-31/03 ENVI 10vols. (5 int.)**

Organized together with **"Akame no Mori wo Mamoru kai"**, a local environmental NPO since 1999. Being located near from both big cities of Osaka and Nagoya, there were some plans of a golf link and disposing industrial garbage and local people have stopped them by **"Woods Trust" movement**. They formed this group in 96 to collect donations to buy and protect lands, to own a pension to enjoy nature, to maintain forests, to create a pond for dragonflies, to host national cospse meeting, etc.

**W:** We will do various works to take care of the forest such as **cutting trees, cutting branches, maintain the footpath, etc.** Main work of this year is **fixing a hiking way near the pond for dragonflies**.

Physically hard. We will support the Youth event in there. Part of **Greening Asia**.

**S:** Local participation to protect nature and Greening Asia. **Bring** some info.!

**A:** The pension named "Eco Resort Akame". SB! CV

**L:** About 60 km east of Osaka. There are famous falls nearby many hikers visit. The climate in this season is quite cold, so don't forget to bring warm clothes.

**T:** Osaka or Nagoya (1 hour by train from both).

**LA:** Excursion, exchange parties, Visiting schools, communication with elderly people of eco-resort, etc.

**SR: Motivation letter is needed!** Strong motivation for conservation forest work. **Physically strength.**

**NICE/18 Haki (Fukuoka) 18/03-30/03 FEST, ARTS, KIDS 10 vols. (5 int.)**

Organized together with “**Kodomo-Art**” since 2004. Kodomo art, Society of Children's Theater Works and Community Development, was founded in 1972. They have held the international child art festival for several years. They want to activate this area through art and cultural promotion in the future for kids and build the fruitful network of a child and a cultural art organization. We aim to **involve local people to promote global understanding, friendship and solidarity through this festival.**

**W:** We will help to **prepare the festival**, such as site management and decoration. We will promote this festival to local kids through the visiting the kindergarten and the nursery school. We will do the activities for children to spend the festival with a lot of fun.

**S:** Unique art festival. **Bring** some info.!

**A:** Local house. SB! CV

**L:** Small town in the mountains, 60 km south of Fukuoka. Good access by highway bus from Fukuoka.

**T:** Fukuoka (1.5 hours by bus). From Osaka, 5 hours by bullet train or 12 hours by midnight bus.

**LA:** Exchange parties, excursion, etc.

**SR:** Interest in **art and Kids!!**

**Applications for international volunteers should be sent to MCE!!**

**NICE-MCE/19 Greening Mongolia (\* Mongolia) 25/04-08/05 ENVI 16 vols. (5 int.)**

Organized together with **MCE (Mongolian workCamps Exchange)** and supported by **Greening Asia Fund** of NICE since 2002. The forests problem is serious also in Mongolia. Before 1990, the forests were covered with 10% of land, but 7% today, caused by cutting trees without any controls and forest fire. It takes a long time here to grow trees and the current and water level of river has been decreased. Summer workcamps of MCE keep watering the plants, so the forests have been grown quite well.

**W:** We will **plant trees** in MCE project site and some other places. There are increasing activities by some organizations to plant trees but it takes a hundred or more years to be grown, so we should also join this movement by global power! May is the best season to plant trees. Part of **Greening Asia.**

**S:** The future plan of international workcamps in Mongolia and Greening Asia. **Bring** some info.!

**A:** GER (Mongolian traditional tent) and Youth hostel. Very warm sleeping bag is needed! CV

**L:** Buhug river, located 45km far from Ulaanbaatar. The temperature will be about 10-20 C, but be careful sometimes weather will be changed lot. Sunny, sometimes rainy and windy.

**T:** Ulaanbaatar (MCE will kindly pick volunteers up at the airport!)

**LA:** Cultural exchange program, excursions, etc.

**SR:** To like planting work and simple nomadic life. Mongolian speakers are welcome! For more info. and applications, **please contact with MCE: mce-mn@magicnet.mn**

**PF: 160 Euro** to be paid on your arrivals

**NICE/29 Hakkenzan 1 (Hokkaido) 09/05-22/05 ENVI 5 vols. (3 int.)**

Newly Organized together with **Environmental Group for Mt. Hakken (EGMH)** and **Hakkenzan Orchard (HO)**. EGMH was founded in 2000 by German lady whose husband runs HO. EGMH runs German style of environmental educational programs in HO such as hand craft by natural materials (stones, wools, woods, etc.), eco-workshops and hosting German long term volunteers. **They want to create a Nature Experience Eco Rally Course Construction** (including a barrier free wood-path zone).

**W:** We will **create a trail of 1.5 km** by physical work (peeling barks, digging holes, cutting trees, painting, putting stones, maintaining wood trails, etc.) as well as concept work (creating ideas, making sign boards, leaflets, etc.). In the end, we will celebrate completion of our work with a music parade!

**S:** **Nature trails** in each country and global cooperation. **Bring** some info.!

**A:** Rest house of HO. SB! CV (MP for lunch).

**L:** Foot of Mt. Hakken with wonderful nature in Hokkaido island. It will be still cold in May.

**T:** Sapporo. It takes about one hour by bus to the city center.

**LA:** Exchange parties, excursion, cycling, hot spring, etc.

**SR:** High motivation to the work and its aim. Experience of making trails is welcome!

**NICE/20 Maki 2 (Nagano) 23/06-06/07 AGRI 8 vols. (4 int.)**

**Same as NICE/12: Maki1 except the following point;**

**W:** We will help their **organic farming** (weeding in rice and vegetable fields, planting vegetables, taking care of goats and chicken) and also **carry the things from the town, renovate the trails, help their house work, etc.** Be ready to work for quite a long time (**05:30-18:00** with some brakes) and **hard.**

### **NICE/30 Aizu (Fukushima) 09/07-02/08 AGRI, KIDS 4 vols. (2 int.)**

Newly (in this place) organized together with **Terakoya-Hojyosha (TH)**. TH runs an alternative school where they host the children who could not go to the formal schools because of many different reasons. In this area, there has been depopulation, especially a decrease in children and a significant ageing population. The goal of this workcamp is to energize and engage the community through the power of global voluntary service as well as empowering and promoting global education to the children.

**W:** We will be divided into 4-5 groups, **help local farmers** such as cutting brush and harvesting vegetables.

We will **prepare, run and clean up after the local summer festival**. We will also join a kid's camp, which will be held in this village for few days.

**S:** Organizing nature activities. Please bring some information of nature school in your country.

**A:** Building in abandoned school. SB! CV

**L:** **A small town in forest area**, the population is about 18,000. There is a hot spring in the village.

**T:** Tokyo (5 hours from Tokyo by bus)

**LA:** Exchange parties, ski, etc.

**SR:** Interest in **rural area and the project** of the workcamp.

### **NICE/31 Showa-mura 3 (Fukushima) 12/07-25/07 AGRI 10 vols. (5 int.)**

Organized together with **Choma-Club (CC)** since 2008. CC is a local NPO to organize a lot of projects for community development and youth-empowerment. Showa-mura is a rural village surrounded by the abundant nature and has been facing serious **depopulation problems**. The **number of vacant houses and abandoned farms** have been rapidly increasing. So, CC has been trying to restore and animate the community.

**W:** We will help **vegetable and flower farms**. We will also **cultivate the abandoned farmland and repair the abandoned school buildings** where the community wants to further develop these activities with volunteers. We will also participate in several local events.

**S:** Nature-orientated activities and nature schools in your country. **Bring** some info.!

**A:** The abandoned school buildings the volunteers are repairing. SB? CV.

**L:** **Small village in the forested area**, the population is about 19,000. There is a hot spring.

**T:** Tokyo (5 hours from Tokyo by bus)

**LA:** Excursions, exchange parties, etc.

**SR:** Interest in **agriculture and further developing the workcamp project**.

### **NICE/32 Yasuoka (Nagano) 19/07-31/08 KIDS 5 vols. (2 int.)**

Organized together with **Green Wood (GW)** since 07. GW is a local NPO established in 1993 to promote education of children by experience in nature. They run a school for students from cities, first aid classes, kids exchange projects in the northeast Asia and various types of children's nature experience camps for community planning. They have many staff members and also short term volunteers (for several days), but **need a few longer term volunteers** to run the summer program stably.

**W:** We will assist to **run various types of 3-10 days children's summer camps** such as playing with kids, managing safety, food and other stuffs, helping kids to cook, preparing and cleaning the places. We will be **separated to each program** to work with local staff, so don't expect to be there as a group.

**S:** Kids play scheme in each country. **Bring** some info.!

**A:** Tents in the camping site. SB! CV with kids and the staff.

**L:** The south edge of Nagano prefecture and 80% of the village land is forests. 40% of 2,000 inhabitants are aged 65 or more. They have rich nature and a lot of fruit farms!

**T:** Tokyo, 5-6 hours by highway bus and slow train

**LA:** Various enjoyable programs with children, exchange parties, etc.

**SR:** Very high motivation to **work with kids all day** and run **outdoor activities even in rain**. **Good Japanese language and a motivation letter is needed!** The common language is Japanese.

### **NICE/ 33 Abukuma (Fukushima) 20/07-06/08 KIDS 6vols. (3 int.)**

Newly organized together with **Abukuma Nature School Network (ANSN)**. Their theme is **learning from soil and nature, and live together!** And to make it into practice, ANSN organizes many programs for ranging from kids to adults such as a nature school, classrooms for farmers, foresters and organic farming groups, visiting local schools, 2 weeks nature camps for kids, etc. They are hoping to make these programs more active and make better relationship between local community and organization.

**W:** We will assist to **run various types of 3-10 days children's summer camps** such as playing with kids, managing safety, food and other stuffs, helping kids to cook, preparing and cleaning the places. We also

do agricultural work with kids.

**A: Share room** of the nature school. **Cooked by vols.**

**L: Small village in the forest area, the population is about 5,000**, surrounded by rich nature. The temperature in the winter can be minus 5 to 10 though the inside buildings are warm enough!

**T:** Tokyo (2 and a half hours from Tokyo by bus)

**LA:** Participation in the local events, many opportunities to learn the local wisdom, etc.

**SR: strong motivation to work with the host and live in the remote area with a lot of nature, respect to the local custom and life, flexibility, friendliness, positive mind and those who likes children.**  
Experience of similar types of work is welcome!

### **NICE/34 Kuromatsunai (Hokkaido) 20/07-16/08 KIDS 6 vols. (3 int.)**

Organized together with **Buna-no-mori Shizen Gakko** (nature school with beech forests) since 03. BSG was started in 1998 to promote quality and quantity of ecological education for kids and run various kinds of kids programs. They have a **summer vacation program around 27/07-15/08** with about **20-25 kids aged 8-15** where they enjoy canoe, playing in the coast and river, camping, etc. and want to put global colors which should grow understanding and passion to different cultures in those kids.

**W:** We will help to **run this summer program** by **playing with kids, running cultural programs** such as teaching your dance, songs, arts, sports, games, cooking, etc. and **helping house works** such as cleaning and cooking with professional staffs and other vols. You won't have much free time.

**S:** Life of kids in each country to be introduced to the kids there. **Bring** some info.!

**A:** Old school (you will sleep in the same rooms with the kids by turns). **SB! CV**

**L:** South west of Hokkaido island. Full of beautiful nature with national reserve of beech forests, a river and wetland. Main industry is cattle farming.

**T:** Sapporo (2 hours by express train). From Tokyo, 13 hours by bullet train or 32 hours by ship.

**LA:** Exchange parties, excursion, etc.

**SR:** High motivation to **work with kids all day** and to run **outdoor activities even in rain**. Similar types of experience and Japanese speaking skill are welcome! **Motivation letter is needed!**

### **NICE/35 Hakkenzan 2 (Hokkaido) 20/07-20/08 EDU, ENVI, AGRI 3 vols. (2 int.)**

**Same as NICE/29: Hakkenzan 1 except the following points;**

**W:** We will run **"Environmental Educational Café"** by guiding children and their parents who will visit HO to experience handicraft by natural materials (explaining and talking, setting and cleaning up the place, etc.). We will also help the preparation and reception of Eco Rally and do some farming.

**S: Similar practice** in each country and global cooperation. **Bring** some info.!

**SR:** Very high motivation to **work with kids** and run **the programs**. **Good Japanese language skills and a motivation letter are needed** (while one of vols. does not have to speak fluent Japanese since the others can help to interpret even though speaking Japanese is very useful)! Handcraft skills are welcome.

### **NICE/ 36 & 49 Kodomo-mura (Oita) 21/07-23/08 KIDS 9 vols. (5 int.)**

Organized with **Kodomo-mura Project** since 1998. Every year, they run a summer vacation kids program called **'Kodomo-mura'** (Kids Village = **KV**) with **30 kids aged 8-15 years of age**. They **play, cook and live in nature as they learn** independence, sensitivity, group cooperation, and a global understanding and interest in different cultures. Volunteers need to be prepared to spend 24 hours with the kids for this period (except for a few days off).

**W:** We will **help out and live together with kids in the Kids Village** supporting activities and sharing your culture. We will encourage the **kid's independence and creativity by letting them plan the schedule**, so you will need to respect their ideas!

**S:** Life of children in each country and their activities, games and hobbies. **Bring** some info.!

**A:** Community center and Tents. **SB! CV** but sometimes **MP**

**L:** Small village in the mountains, in the very center of Kyushu Island

**T:** Fukuoka. From Osaka, 9 hours by bullet train or 12 hours by midnight bus.

**LA:** Excursions, exchange parties, etc.

**SR:** Volunteers need to join the full period (21/07-23/08) and should **love kids and speak and understand some Japanese**. Responsibility, group cooperativeness and motivation are necessary! Specialist in games, songs, cooks and similar types of experience is welcome. **Motivation letter is required.**

### **NICE/37 Onuma 1 (Hokkaido) 23/07-30/07 ENVI 5 vols. (3 int.)**

Organized together with **Onuma Milestone 22**, a local NGO made by President of **Fishermen's Cooperative** and Director of international exchange association since 2004. Though Onuma lake has been

a popular tourism spot for a long time because of its beautiful scenery, it has been **polluted** by over use of agricultural chemicals in cattle farming and erosion from abandoned forests with alien trees. President of Cooperative has bought a forest and wants to revive it to original nature with native trees!

**W:** We will **remove some alien conifer trees** that disturb growth of other plants and animals and also help to prepare/ run/ clean up the Lake Water Festival on 24-25 Jul. We will also make and put the carbon fivers in the lake to purify the water with some specialists. Part of **Greening Asia**.

**S:** 100 years plan of the forests and sustainable town planning. **Bring** some info.!

**A:** Local house rent for the workcamps. SB! CV

**L:** South of Hokkaido island, in a national park near Hakodate city which is famous for romantic view in the night, especially for sweet couples!

**T:** Sapporo (3 hours by express train). From Tokyo, 10 hours by bullet train or 30 hours by ship.

**LA:** Excursion, joining the lake festival, exchange parties, etc.

**SR:** Motivation to **actively work in the forests and with local people!** You will live and work together with 5 volunteers (Japanese and international) of the **3 months workcamp** in 12 Jul.-30 Sep.

### **NICE/39 Naganuma (Hokkaido) 26/07-08/08 ENVI 7 vols. (4 int.)**

Newly Organized together with **Team to Create Eco-villages in the North (TCEN)**. TCEN was founded just in 2009 by a lady who have researched many eco-villages in the western Europe. They have 30 members and run "Eco-village Life School" (organic farming, seminars, workshops) and also introduce many different eco-villages on the web., newsletters, etc. even though **they still don't really have their own village** (they rent a land from the farmers and other eco-village) yet since they are still new!

**W:** We will help **landscaping and weeding in the organic rice field** where they plan to create an eco-village. We may also sometimes help other local farmers in the area (fruits, chicken, etc.). TCEN expect your physical power and also to create a bridge between the world/ cities and the local area.

**S:** **Eco-villages** in each country and global cooperation, future plan of TCEN. **Bring** some info.!

**A:** Common House in place where they plan to create the eco-village, with a few local staff. SB! CV

**L:** Central Hokkaido with 12,000 inhabitants. Farming is the main industry while the town promotes slow food and green tourism. The place you will stay is quite isolated for transportation!

**T:** Sapporo. It takes about one hour by bus from Sapporo and also Shin Chitose Airport.

**LA:** Exchange parties, excursion, home stay, visit to the temple, etc.

**SR:** High motivation to eco-villages (you are welcome to visit them in your country beforehand!). **A motivation letter is needed!** You will live and work together with a few staff of TCEN.

### **Teenager workcamp!!**

#### **NICE/40A Un-nan A (Shimane) 27/07-06/08 AGRI, FEST 13 teen vols. (3 int.)**

Organized together with **a local group** formed for this project since 2006. In 2005, we started an international teenage workcamp in Japan in order to give them the chance to understand different cultures, parts of society and build international friendships. In this area, there has been depopulation, especially a decrease in children and a significant ageing population. The goal of this workcamp is to energize and engage the community through the power of global voluntary service.

**W:** We will **help the local farmers** by working alongside them with activities such as cutting bushes or harvesting vegetables. We will also **prepare, run and clean up after the local summer festival**. There are possibilities to do other community work.

**S:** The youth issues and education in each country. **Bring** some info.!

**A:** Public house. **SB! CV**

**L:** Un-nan is located in the east part of Shimane prefecture, the area of highlands about 100 km from Matsue-city. It is a small city with a population of about 50,000.

**T:** Osaka (5 hours by train). From Tokyo, 8 hours by bullet train or 12 hours by midnight bus.

**LA:** Exchange parties, excursions, sports festival, etc.

**SR:** **Only 15-18 years old**

**PF:** The additional fee of **20,000 yen** should be paid on arrival.

#### **NICE/40B Un-nan B (Shimane) 27/07-06/08 KIDS, AGRI, FEST 5 adult vols. (2 int.)**

**Same as NICE/40A Unnan A except the following points.** We want to involve international adult volunteers as staff to make communication and exchange among teenager volunteers run smoothly.

**W:** First we will have an orientation to understand the objectives of the project. Then, during **the workcamp, the adult volunteers will live with the teenagers and help**, such as by supporting them in activities, sharing your culture and organizing some activities for intercultural learning.

**SR:** **Only over 20 years of age.** Volunteers should **like teenagers and be motivated to work with them**

throughout the project. Similar experience is welcome! **Motivation letter is needed!**  
PF: No fee for the adult volunteers!

## **Applications for international volunteers should be sent to VYA!!**

### **NICE-VYA/41 Taishi 3 (\* Taiwan) 27/07-10/08 ARTS, CONS 15 vols. (5 int.)**

Organized together with **Vision Youth Action (VYA)** since 2007. VYA and NICE started workcamps in Taiwan together in 2007-08 and from 2009, VYA does everything by themselves as planned. But because of the history of Taishi workcamp, VYA still kindly invites NICE to co-organize it. Taishi Artist Association was established in 99 and activate the town by various artistic activities such as running life museum and local sea food restaurant, eco-tourism for city people, shell and oyster arts, etc.

**W:** We will **join some public art activities via painting for the community with the subject of "local legends or domestic folk tales or game map for children"** to promote multicultural education.

Community people will learn different culture via interesting stories or games of your county.

**S:** Community development process and future prospect of their motherland.. **Bring** some info.!

**A:** Taisi community service center. SB! CV

**L:** A small fishing village in Yun-Lin County, locating on the middle-western coast of Taiwan

**T:** Tao-Yuan international airport. 4 hours of bus away from Taishi (about NTD\$ 360-400, passengers may need to transfer in Taichung to get to Taishi or take bus from Taipei directly)

**LA:** Excursion, exchange parties with local people, eco-tourism (optional), local/ night market, etc.

**SR:** High motivation for learning and respect to local culture. Chinese language and artistic skills are welcome but not necessary! Ask VYA [workcamp@vya.org.tw](mailto:workcamp@vya.org.tw) for more correct & detailed info.

### **NICE/42 Showa-mura 4 (Fukushima) 28/07-11/08 AGRI 10 vols. (5 int.)**

Same as NICE/31 Showa-mura 3

### **NICE/43 Namino (Kumamoto) 31/07-16/08 AGRI, FEST, KIDS 12 vols. (6 int.)**

Organized together with **a local group** formed for this project since 1998. The notorious religious group "Aum", who organized the sarin-gas attack on Tokyo subways in 1995, had tried to set up a base in Namino prior to 1995, despite the protests from the local community. Now, the area is **COMPLETELY SAFE**, as the community has eject them from the area, but is still damaged by a negative image. They want to revive the community and work towards defusing their negative by international workcamps.

**W:** We will be divided into 4-5 groups, **help local farmers** such as cutting brush and harvesting vegetables.

We will **prepare, run and clean up after the local summer festival**. We will also join a kid's camp, which will be held in this village for few days.

**S:** Activate the local community. **Bring** some info.!

**A:** Walking Center (base for environmental education). **SB! CV**

**L:** Namino is a very beautiful village and in the center of Kyushu Island about 110km southeast of Fukuoka. It is located near the border with Oita and Kumamoto prefectures.

**T:** Fukuoka (5 hours by train). From Osaka, 9 hours by bullet train or 13 hours by midnight bus.

**LA:** Home stay, hiking on the mountain, hot spring, etc.

**SR:** Interest in **agriculture and the project** of the workcamp.

### **NICE/44 Saga (Saga) 01/08-13/08 KIDS 8 vols. (4 int.)**

Organized together with **Dream School Academia Terra (DSAT)** since 2006. DSAT was founded to establish a new alternative school in Saga. They have **a summer vacation program with 30 kids aged 7-12** where they **play, cook and live in the nature as they plan** to grow their independence, sensitivity, group cooperation, and want to put global colors which grow understanding and passion toward different cultures. We need to be ready to spend 24 hours with them during this period except some free days.

**W:** We will **help out and live together with kids in the Kids Village** supporting activities and sharing your culture. We will encourage the **kid's independence and creativity by letting them plan the schedule**, so you will need to respect their ideas!

**S:** Life of kids in each country and its activities. **Bring** some info.!

**A:** A community center and tents. SB! CV

**L:** 30 km south of Fukuoka, but full of nature near the workplace.

**T:** Fukuoka (1 hour by train). From Osaka, 9 hours by bullet train or 12 hours by midnight bus.

**LA:** Excursion, exchange parties, etc.

**SR:** High motivation to **work with kids all day** and to run **outdoor activities even in rain**. Similar types of experience and Japanese speaking skill are welcome! **Motivation letter is required.**

### **NICE/45 Unzen (Nagasaki) 01/08-13/08 KIDS, ENVI, ELDE 12vols. (6 int.)**

Organized together with **Unzen Social Welfare** (a semi-governmental) **Association** since 1994. The first location was in 'Minami-takaki' the neighboring town to 'Kunimi', where it is now held. 'Kunimi' town has been incorporated into 'Unzen city'. The past workcamps were quite successful in encouraging **Summer Volunteer School** (SVS) that is held for 2 days to promote volunteering and international friendship with about 20 local kids aged 10-18.

**W:** We will 1) run 2 days international exchange program with 20 local girls and boys within the ages of 10 to 15, 2) work on a garden around an old samurai residences which is designated as important cultural properties with local vol. groups and 3) **care for elderly people** at a nursing-care facility.

**S:** Current volunteer activities by kids in your country. **Bring** some info!

**A:** Social Welfare Center where we also have day-care facility. **SB! Mostly MP**

**L:** Small town, about 80 km east of Nagasaki, very famous as a symbolic place against nuclear war. Unzen is very famous for football in Japan.

**T:** Fukuoka (3 hours by train/ ferry). From Osaka, 7 hours by bullet train or 13 hours by midnight bus

**LA:** Home stay for a few days, exchange parties, etc.

**SR:** Motivation to encourage youth involvement in care for the elderly and disadvantaged. Some fluency in Japanese is helpful.

### **NICE/46 Ogata (Oita) 01/08-16/08 AGRI, FEST, KIDS 10 vols. (5 int.)**

Organized together with **a local group formed specifically for this project** by various people such as the local governmental staff, organic farmers and the community since 2002. The population of Ogata town was 6,500 and then has been incorporated into Bungo-ono city. People from Ogata are migrating to big cities and with declining birthrates, they face the problems of an ageing population. The goal of this workcamp is to energize and engage the community.

**W:** We will (a) be divided into 3-4 groups and **help local farmers** such as cutting brush and harvesting vegetables, (b) join a kids' activity which is held for few days and (c) help to **prepare, run and clean up after "the Kodai festival" that is a very traditional festival.**

**S:** Effective cases to activate depopulated areas in each country. **Bring** some info.!

**A:** Public hall. **SB! CV**

**L:** Ogata is a very beautiful town famous for its tulips. There is a large waterfall that is known as "the Oriental Niagara Falls". It is located near the border of Oita and Kumamoto prefectures.

**T:** From Fukuoka, 5 hours by train & bus. From Osaka, 9 hours by bullet train or 13 hours by bus.

**LA:** Exchange program with local people, hot spring, etc.

**SR:** **Interest in nature, agriculture and the project** of the workcamp.

### **NICE/47 Aizu 2 (Fukushima) 03/08-17/08 KIDS 4 vols. (2 int.)**

Organized together with **Terakoya-Hojyosha (TH)** since 2010. Every year, they run a summer vacation children program with **30 children aged 8-15 years of age.** They **play, cook and live in nature as they learn** independence, sensitivity, group cooperation and a global understanding and interest in different cultures. Volunteers need to be prepared to spend 24 hours with the children for this period (except for a few days off).

**W:** We will **help out and live together with kids in the Kids Village** supporting activities and sharing your culture. We will encourage the **kid's independence and creativity by letting them plan the schedule**, so you will need to respect their ideas!

**S:** Life of children in each country and their activities, games and hobbies. **Bring** some info.!

**A:** Building in abandoned school. **SB! CV**

**L:** **A small town in forest area**, the population is about 18,000. There is a hot spring in the village.

**T:** Tokyo (5 hours from Tokyo by bus)

**LA:** Exchange parties, ski, etc.

**SR:** High motivation to **work with kids all day** and to run **outdoor activities even in rain.** Similar types of experience and Japanese speaking skill are welcome! **Motivation letter is required.**

### **NICE/48 Hanawa (Fukushima) 03/08-18/08 FEST 14 vols. (8 int.)**

Organized together with **KOBOSHA**, a local NPO for community planning, since 1996. We will join the summer festival called 'TORO NAGASHI' that is a memorial service for an ancestor by making a lantern and floating it down a river. We will make large **TORO** (2 x 2 meters) for the festival in this workcamp. We aim to mobilize the area with workcamps. Through past workcamps, the local community has been much more activated and redeveloping pride for their community!

**W:** We will mainly help and join the festival by **making four big lanterns 'TORO'** (2 x 2 meters) and

**hundreds of small lanterns together with local students.** You can design your own large 'TORO' in this festival. It will be physically challenging work.

**S:** Unique festivals in each country. **Bring** some info.!

**A:** Public Sports Center. **SB! CV**

**L:** Small town in the southern part of Fukushima, about 150 km north of Tokyo, 80% of the area is forest.

**T:** Tokyo, 5 hours by slow train

**LA:** Home stay, sports, exchange parties, etc.

**SR: Interest in Japanese culture, making big lanterns ('TORO') and working with locals!**

### **NICE/50 Shiba-son (Miyazaki) 07/08-16/08 ENVI 10 vols. (5 int.)**

Organized together with **Shiba Agriculture Association** since 2009. Shiiba-village is 90 % or more in the mountainous district, it is specified for the Kyushu central mountainous district quasi-national park. In spite of the town's natural heritage, depopulation (especially of youth) is a serious problem here similarly to many other parts of the country side in Japan. We aim to help with nature conservation and to activate the area through workcamps.

**W:** We will be divided into some groups, **help local farmers** such as planting flower seedling with local people. And we will work in the Kyushu central mountainous district quasi-national park such as making the Mountain climbing trail and sign board.

**S:** Best practice to revive depopulated areas in each country and their networking. **Bring** some info.!

**A:** Community center. Sleeping bag is necessary! Meals are provided.

**L:** Shiba village is a very beautiful village and in the center of Kyushu Island. It is located near the border with Miyazaki and Kumamoto prefectures.

**T:** Fukuoka (5 hours by train). From Osaka, 9 hours by bullet train or 13 hours by midnight bus.

**LA:** Exchange parties and excursion and trekking, etc.

**SR: High motivation to work hard and simple life in the isolated area and respect to the local culture and way of the local organization!**

## **Teenager workcamp!!**

### **NICE/51A Miyoshi A (Hiroshima) 07/08-16/08 AGRI, FEST 13 teen vols. (3 int.)**

Newly organized together with **a local group** formed for this project. In 2005, we started an international teenage workcamp in Japan in order to give them the chance to understand different cultures, parts of society and build international friendships. In this area, there has been depopulation, especially a decrease in children and a significant ageing population. The goal of this workcamp is to energize and engage the community through the power of global voluntary service.

**W:** We will **help the local farmers** by working alongside them with activities such as cutting bushes or harvesting vegetables. We will also **prepare, run and clean up after the local summer festival**. There are possibilities to do other community work.

**S:** The youth issues and education in each country. **Bring** some info.!

**A:** Public house. **SB! CV**

**L:** Miyoshi is located in the north part of Hiroshima prefecture, the area of highlands about 50 km from Hiroshima-city. It is a small city with a population of about 50,000.

**T:** Osaka (3 hours by train). From Tokyo, 8 hours by bullet train or 12 hours by midnight bus.

**LA:** Exchange parties, excursions, sports festival, etc.

**SR: Only 15-18 years old**

**PF:** The additional fee of **20,000 yen** should be paid on arrival.

### **NICE/51B Miyoshi B (Hiroshima) 07/08-16/08 KIDS, AGRI, FEST 5 adult vols. (2 int.)**

**Same as NICE/51A Miyoshi A except the following points.** We want to involve international adult volunteers as staff to make communication and exchange among teenager volunteers run smoothly.

**W:** First we will have an orientation to understand the objectives of the project. Then, during **the workcamp, the adult volunteers will live with the teenagers and help**, such as by supporting them in activities, sharing your culture and organizing some activities for intercultural learning.

**SR: Only over 20 years of age.** Volunteers should **like teenagers and be motivated to work with them throughout the project**. Similar experience is welcome! **Motivation letter is needed!**

**PF: No fee** for the adult volunteers!

### **NICE/52 Taishi-Tonda (Osaka) 07/08-20/08 ENVI 10 vols. (5 int.)**

Organized together with local NPOs, '**Association to protect nature in Tondabayashi**' and '**Hamuro club**' since 1999. Even though 70% of Japan's land is forested, **the forests are not properly maintained**, as

there is a lack of investment in the health and ecology of these ecosystems, since imported wood is much cheaper. Over 90% of our forests are not virgin forests and cannot be left as “nature”, so it is important to provide continuing care for our forests. We will try to **revive our forests and create a balanced ecology.**

**W:** We will work in two different forests. One is the ‘NICE Forest’, where we often have weekend workcamps. We will **cut and clear trees to make trails, cut grasses and make steps for a footpath** in an abandoned rice field. Part of the **Greening Asia** project.

**S:** Similar kinds of activities of forest care and protection in each country. **Please bring** some information

**A:** Simple renovated house and a log house constructed by local people. Cooking with firewood. SB! CV

**L:** 60 km south of Osaka, but in a natural setting.

**T:** Osaka

**LA:** Exchange parties, experiencing Japanese culture, home stay, etc.

**SR:** Interest in **nature protection** and **promotion** and exchange with people. **Adaptability to enjoy a simple lifestyle!**

### **NICE/55 Kitakyushu (Fukuoka) 10/08-23/08 KIDS 10 vols. (5 int.)**

Organized together with a **local group** formed for this project since 2007. Every year, they run a summer vacation kids program with **30 kids aged 8-15 years of age.** They **play, cook and live in nature as they learn** independence, sensitivity, group cooperation, and a global understanding and interest in different cultures. Volunteers need to be prepared to spend 24 hours with the kids for this period (except for a few days off).

**W:** We will **help out and live together with kids in the Kids Village** supporting activities and sharing your culture. We will encourage the **kid’s independence and creativity by letting them plan the schedule**, so you will need to respect their ideas!

**S:** Life of children in each country and their activities, games and hobbies. **Bring** some info.!

**A:** Shinto shrine. **SB! CV**

**L:** The north part of Kyushu with a population is 1 million.

**T:** Fukuoka (1 hour by train). From Osaka, 3 hours by bullet train or 10 hours by midnight bus.

**LA:** Excursions, exchange parties, etc.

**SR:** High motivation to **work with kids all day** and to run **outdoor activities even in rain.** Similar types of experience and Japanese speaking skill are welcome! **Motivation letter is required.**

### **NICE/56 Wazuka (Kyoto) 10/08-25/08 AGRI, CONS 14 vols. (7 int.)**

F Organized together with a **society for the study of producing organic Japanese tea** since 2001. There are some farmers who produce entirely organic tea, while others only do it in part. We want to activate this area through tea for the future development. The situation of organic farming within Japan is still very challenging. We will **learn about the history of tea in Japan**, help farmers and try to **involve more of the local community!** we began making a tea park that might become a symbol of Wazuka town.

**W:** Ideas to help create and **care for the organic tea park.** Furthermore, we will care the forest around the Park. We will divide you into a few groups that will **help and also learn from the farmers** and also organize a day event that further involves the community in their redevelopment movement.

**S:** The proposal of the future plan for Wazuka agritourism and tea garden. **Bring** some ideas!

**A:** Public house. SB! CV

**L:** The most southern part of Kyoto prefecture, near the center of Kyoto and Nara.

**T:** Osaka

**LA:** Exchange parties, experiencing Japanese culture, home stay, etc.

### **NICE/57 Ogi (Niigata) 13/08-01/09 ENVI, FEST 6 vols. (3 int.)**

Organized together with “**Morito**”, a local voluntary group in Sado Island, since 2001. They care for the school forest called “**Furusato-no-mori Park**” in Ogi town, on the southern part of the island. They make it possible for the community to enjoy the forest in every season. They are now trying to focus on **caaring for the forest in a joint effort with the community.** They hope youth and foreign volunteers will mentally and physically help to empower the area.

**W:** We will **participate in the famous art festival “Earth Celebration”** and sell soba (buckwheat Japanese noodles) with the local people. We will also work in **the school forests**, cutting bushes and creating recreation programs for local youth to experience the forest. Part of the **Greening Asia** program.

**S:** Unique festivals in each country. **Bring** some info.!

**A:** Tents. **SB! CV**

**L:** 300 km northeast of Tokyo. Sado Island is famous for gold and the Japanese crested ibis. Ogi is in the southern part beside the beach, where you can enjoy fishing and the hot spring!

**T:** Tokyo (6 hours by bullet train and ferry from Naoetsu port)

**LA:** Exchange parties, excursion, fishing, etc.

**SR: Some Japanese** as it will be run in **Japanese!** Experience in nature programs with youth is welcome.

### **NICE/ 58 Hoshino (Fukuoka) 14/08-26/08 ENVI, KIDS, EDUC 10 vols. (5 int.)**

Organized together with a **local group** formed for this project since 1999. This village has received the first prize at the national contests for visibility of beautiful stars in the sky and tiered paddy fields. In spite of the town's natural heritage, depopulation (especially of youth) is a serious problem here similarly to many other parts of the country side in Japan. We aim to help with nature conservation and to activate the area through workcamps.

**W:** We will **work in the forests doing activities such as hiking and cutting bushes** in maintenance of the forest by which we can contribute to nature conservation through global voluntary power. We will also **visit schools to raise awareness** on nature protection. Part of the **Greening Asia** program.

**S:** Effective cases of activated depopulated areas in each country. **Bring** some info..!

**A:** A community center. **SB! CV**

**L:** Small village surrounded by mountains, about 50 km southeast of Fukuoka, very scenic. There was a national summit for the protection of beautiful tiered rice paddies held in Hoshino in 2000.

**T:** Fukuoka (2 hours by train & car). From Osaka, 6 hours by bullet train or 12 hours by midnight bus.

**LA:** Home stay, star watching, exchange parties, etc.

**SR: Interest in nature protection & exchange with a community.** Adaptability to enjoy a **simple lifestyle!**

### **NICE/59 Julau 1 (\* Malaysia) 15/08-28/08 CONS 16 vols. (5 int.)**

Organized together with **Chabo Long House** and **Malaysian Organization of Voluntary Exchange (MOVE)** since 2005. The area and the indigenous people, Iban, have very rich nature and culture by collective life in long houses, but young people go to the cities by lack of jobs and also by that their richness is not valued in this modern civilization. The workcamps have been welcomed by the local people very much and we aim to **activate this depopulated mountain communities** with them!

**W:** We may help to reconstruct some kitchen buildings of the long house since it is getting weak and rotten. We may also sometimes join the work of our host families such as cultivation of pepper fields and rubber tapping and promote eco sponges with which you don't need soap for washing dishes.

**S: Future plan of the long house. Bring** some info..!

**A:** Home stay in the long houses (1-2 vols. in each family) with bathing in the river. **SB! MP**

**L:** A small village in the jungle of Sarawak Island, 6 hours by boat and car from Kuching. 45 minutes by 4W car from the nearest town and we can enjoy to exchange with local cheerful Iban people.

**T:** Kuching (you need to arrive by the 14<sup>th</sup> night and can leave after the 29<sup>th</sup> morning)

**LA:** Exchange parties with Iban dance and drink, jungle trekking and barbeque, etc.

**SR: The project has not been confirmed yet. Quite hard (very limited choices) for vegetarian!**

**PF: 400 RM (about 120 US\$)** to be paid on your arrivals

### **NICE/60 Fuji (Shizuoka) 15/08-28/08 ENVI 20 vols. (10 int.)**

Organized together with **Chuo National Youth House (CNYH)** since 2005. CNYH is a social education facility, which aims to educate youth through a variety of group activities, experiences and study. It is located in the foot in Mt. Fuji that has been a popular tourism spot for a long time ago. However, a beautiful virgin forest that exists widely in Mt. Fuji has been lost by garbage that the tourist leaves and the illegal disposal. We will activate this project as a fresh wind.

**W:** We will have 1 week workcamp with 100 Japanese university students for doing **cleaning activity of Mt. Fuji and working in the forest.** International volunteers will join this project as participants. And we will also help local farmers near the youth House.

**S:** The future plan of beautiful mountains in the world and their networking. **Bring** some info..!

**A:** Volunteer House. **SB! CV**

**L:** Mt. Fuji is 3,776m high and is the highest mountain in Japan situated at the border of southeastern Yamanashi and Shizuoka. It is the world famous symbol of Japan.

**T:** Tokyo (90 min by bullet train or 3 hours by slow train)

**LA:** Mt. Fuji climbing, exchange parties, sports, etc.

**SR: Motivation to actively work and with local people!**

### **NICE/62 Hinode (Tokyo) 16/08-30/08 DISA, ENVI 9vols. (5 int.)**

Organized together with **Hinode Taiyo no Ie (HTI)**, a home for mentally disadvantaged persons, since 1992. **HTI** has been isolated from the local community since its start in 1987 because of prejudice. It

actively opens the home to people through festivals, ceramic art, etc... NICE has been acting as a **"bridge" between the community and HTI** through weekend and international workcamps. They also try to be an ecological institution, so they need help maintaining the surrounding mountainous area.

**W:** We will **1) work with mentally disadvantaged persons in the fields or the building** for 2-3 days, **2) maintain the forest** (part of the **Greening Asia** project) and **3) run an exchange program with local kids** to eradicate the prejudice.

**S:** Prejudice and how to overcome differences, with a special focus on disadvantaged people's interaction with the community in your country. **Bring** some info..!

**A:** A **"Samurai House"**, historically valuable for volunteers in **HTI**. **SBN CV** If you like the traditional style of Japanese architecture, this will make you happy every day.

**L:** Mountainside with natural surroundings, about 50 km west of Tokyo.

**T:** Tokyo (90 min by slow train)

**LA:** Exchange parties, hot spring, ceramic art, etc.

**SR:** Motivation to work with **mentally disadvantaged people**. If you can **speaking some or good Japanese**, it will be useful!

### **NICE/63 Kamakura (Kanagawa) 22/08-31/08 KIDS, SOCI 6 vols. (3 int.)**

Organized together with **Happy Kids Team (HKT)** in NICE and **Kamakura Children Home (KCH)** since 04. HKT was started in 2004 since **Child abuse** was getting more serious year by year, so they organize weekend workcamps 1) every month in KCH, 2) 1-2 times a year for families (to prevent further abuse) and 3) 3-4 times for the foster family association by playing with their children while the parents are joining the seminars. KCH accommodates 60-80 children many of who were abused by the parents.

**W:** We will work in **KCH** mainly to **prepare/ run/ clean up their bon dance festival** on 29 Aug. especially constructing the stage (where we will also show some performance together!). We will also do some other things like **playing with the children in the playground, a dinner with a few elder children**, etc.

**S:** **Child abuse situation and activities** in each country and global cooperation. **Bring** some info..!

**A:** 2 rooms (separated by female and male) of the Church, 10 min. by foot from KCH. **SB! CV**.

**L:** 30 km from Yokohama. Kamakura is an old capital city of Japan in the 13th-15th centuries and has a lot of attraction like old temples, green hills and a beach.

**T:** Tokyo (60 min by slow train)

**LA:** Exchange parties, one night home stay, excursions, etc.

**SR:** **High motivation to work with the children with special background**. Similar type of experience is welcome! **Motivation letter is needed! Vols. need to be ready that the main work will be construction.**

### **NICE/64 Julau 2 (\* Malaysia) 29/08-11/09 CONS 16 vols. (5 int.)**

**Same as NICE/59: Julau 1 except the following point;**

**T:** Kuching (you need to arrive by the 28<sup>th</sup> night and can leave after the 12<sup>th</sup> morning)

### **NICE/65 Showa-mura 5 (Fukushima) 30/08-12/09 AGRI 10 vols. (5 int.)**

**Same as NICE/31 Showa-mura 3**

### **NICE/66 Tokyo-ko (Tokyo) 31/08-14/09 ENVI 12 vols. (6 int.)**

Organized together with **Green Volunteers of Tokyo Port (GVTP)** since 1998. Because construction plan was delayed, a reclaimed land became one of valuable natural place in Tokyo Bay with some ponds and many plants, so various kinds of birds gather there. It became a park in 1989 and GVTP has been **improving ecological conditions and guide visitors** to promote ecological awareness. NICE is working with them very successfully by international and weekend workcamps!

**W:** We will mainly **remove mud from the river**, so their functions can be more active and more fish/ plants/ insects can live there. This work needs to be done in a short time by many volunteers that cannot be done only by the members of GVTP most of who have their jobs. Part of **Greening Asia**.

**S:** Global environment and Greening Asia. **Bring** some info..!

**A:** Office building in the park. **SB! CV**

**L:** Near Haneda (not Narita!) Airport in the central part of Tokyo. Though the park was originally artificial nature, has become valuable place for many birds and plants!

**T:** Tokyo

**LA:** Exchange parties with GVTP members (maybe, barbeque!), excursions, home stay, etc.

**SR:** Motivation to **work hard for nature**

### **NICE/67 Shintoku (Hokkaido) 01/09-14/09 AGRI, ENVI, CONS 8 vols. (4 int.)**

Organized together with **Kyodo Gakusha** since 1998, a **cooperative community** where people with various backgrounds such as mentally disadvantaged, people who are tired of city life, who wants to learn farming or just want to live in the nature. They have five communities in Tokyo, Nagano and Hokkaido and grow animals and vegetables in ecological, organic way with utilizing bacterium. Their cheese got the 1st prize in the global contest! We will **encourage their practice and share the spirit**.

**W:** We will **paint an exchange house and a log house** with the supervision of the specialists. They need us since they are too busy for daily works. We will also join farm work (weeding and harvest **in vegetable, corn and Japanese noodle fields**) and other community work (possibly, maintain the trail).

**S:** Similar types of communities in each country and networking (Social farms). **Bring** some info.!

**A:** The community (female and male are separated). CV together with the people. SB!

**L:** Agricultural country side, 120 km east of Sapporo. -20 degree in winter and 20 in summer.

**T:** Sapporo (2 hours by express train). From Tokyo, 13 hours by bullet train or 32 hours by ship.

**LA:** School visit, joining a summer festival (tugs of war), exchange and birthday parties, etc.

**SR:** Interest and motivation to **work and live in this type of community**. **Respect** to their life. They also recruit volunteers for **LMTI** (Long and Middle Term Individual voluntary projects).

### **NICE/68 Nabari 2 (Mie) 01/09-15/09 ENVI 10vols. (5 int.)**

Same as NICE/17: Nabari 1

### **NICE/70 Onuma 2 (Hokkaido) 05/09-19/09 ENVI 10 vols. (6 int.)**

Same as NICE/37: Onuma 1 except the following points;

**W:** We will mainly **remove some alien conifer trees** that disturb growth of other plants and animals. We will also make and put the carbon fivers in the lake to purify the water with some specialists and put some stones to protect the banks from the waves made by motor boats as Part of **Greening Asia**.

**LA:** Excursion, joining the summer festival, exchange parties, home-stay, school visit, etc.

## **Applications for international volunteers should be sent to UPA!!**

### **NICE-UPA/71 Masaka 2 (\* Uganda) 05/09-19/09 KIDS, SOCI, CONS 18 vols. (6 int.)**

Same as NICE-UPA/16: Masaka 1

### **NICE/73 Minami-Uonuma (Niigata) 08/09-19/09 ENVI, KIDS, EDUC 10 vols. (5 int.)**

Organized together with the **Japan National Trust** since 1995. **JNT** buys lands to protect nature and cultural heritage such as old temples and trains, beautiful beaches, etc. It has been **conserving Mt. Makihata (1,967m)** for 30 years now. The wildlife and landscape has been damaged by tourists but is still retains much of it's beauty. On a couple occasions local climbers were surprised to see foreign volunteers' working to maintain and conserve the area and joined our efforts in cleaning up.

**W:** We will **collect seeds, maintain nature trails, revive ponds** etc. on Mt. Makihata. Part of the **Greening Asia** project. We will also **visit schools to raise awareness and mobilize the local youth** to protect nature in their own area. On one day, we will **help local farmers** by harvesting vegetables.

**S:** Protection of mountain areas in each country and Greening Asia. **Bring** some info.!

**A:** Tents or a mountain hut in the 1st week and a community center in the 2nd. **SB! CV**.

**L:** Mountainous, agricultural town about 170 km north of Tokyo. Famous for the best **sake** and rice! The hut we will stay at during the 1st week is a paradise to some with millions of stars visible!

**T:** Tokyo (2 hours by bullet train or 4 hours by slow train)

**LA:** Exchange parties, excursion, etc.

**SR:** You need to be ready to be **physically challenged**, to climb up the mountain **and also to enjoy working with kids**.

### **NICE/82 Katsuyama (Fukui) 10/09-23/09 MANU, AGRI, ENVI 10 vols. (5 int.)**

Organized together with **Obara Eco Project (OEP)** and **Katsuyama city government** since 2009. There were 600 inhabitants in Obara village with 90 houses, but now only 2 old ladies! OEP was founded by the Foresters cooperative and local people in 06 and have rehabilitated 3 houses of cultural heritage. Depopulation problem is serious in most of mountain parts in Japan and many fields and forests are abandoned, so we will try to improve the situation by voluntary power!

**W:** We will **clean up after the renovation work of the old houses** that will have been renovated by OEP and the local students in August as well as other work to help the community (e.g., cutting glasses). In the second week, we will help **farming** in other places of the city and **maintain the Dinosaurs Park**.

**S:** Best practice to revive depopulated areas in each country and their networking. **Bring** some info.!

**A:** Renovated house (traditional house!). SBN CV

**L:** About 200 km north east of Osaka. Katsuyama is an agricultural city and famous for dinosaurs discovery and Obara is located at 500 a.s.l. and famous for deep snow (405 meters) in winter!  
**T:** Osaka (2 hours by express train). From Tokyo, 3.5 hours by express train/ 8 hours by highway bus.  
**LA:** Exchange parties, visit to the Dinosaurs Museum, excursion and trekking, etc.  
**SR: High motivation to work hard and simple life in the isolated area and respect to the local culture and way of the local organization!**

**NICE/74 Iwami Ginzan 2 (Shimane) 11/09-25/09 ENVI 6 vols. (4 int.)**

Organized together with the 'Organization of Green and Water' (founded in 1992) since 2007. This organization was established to advocate for the importance of the prairie and forest in our ecosystem. They work around Iwami Ginzan, a silver mine, which was registered as a World Heritage site in 2007. The organization wants to care for the forests and prairies. It is important to continue to care for our forests after we have disrupted the ecosystem. Extension of bamboo forests is a serious problem in Japan.

**W:** We will do various work to maintain and protect the forests such as **cutting bamboos and grasses, burning grasses**, etc...It will be physically challenging. Part of the **Greening Asia** project. Furthermore, we will teach about forest environment to the primary school children.

**S:** Similar kinds of activities of forest care and protection in each country. **Bring** some info.

**A:** National Sanbe youth's house. SBN MP

**L:** About 250 km northwest of Osaka. Near the Sea of Japan

**T:** Osaka (9 hours by train). From Tokyo, 6 hours by bullet train or 12 hours by midnight bus.

**LA:** Visiting school, exchange parties, home stay.

**SR: Interested in nature conservation**

**NICE/77 Showa-mura 6 (Fukushima) 21/09-05/10 AGRI 10 vols. (5 int.)**

Same as NICE/31 Showa-mura 3

**NICE/78 Maki 3 (Nagano) 13/10-26/10 AGRI 8 vols. (4 int.)**

Same as NICE/12: Maki 1 except the following point;

**W:** We will help their organic farm by cutting thatch, threshing rice, selecting beans, taking care of goats and chicken and also **carry the things from the town, renovate the trails, help their house works, etc.** Be ready to work for quite a long time (05:30-18:00 with some brakes) and **hard**.

**NICE/79 Showa-mura 7 (Fukushima) 14/10-28/10 AGRI 10 vols. (5 int.)**

Same as NICE/31 Showa-mura 3

## < Bilateral / Trilateral / Group workcamps >

**NICE-KNCU/04 Van Vieng (\* Laos) 15/02-28/02 KIDS, SOCI, EDUC 18 vols. (0 int.)**

Organized together with **KNCU National Commission for UNESCO (KNCU)**, **AVAN (Asian Volunteer Action Network)** and **Van Vieng Youth Center (VVYC)** since 2009. KNCU and AVAN (network of individuals who has done voluntary service for one year in Japan) work for rural development in Van Vieng by running school bus and English classes, construction of the library and skill training. They run VVYC with the local youth. NICE started a workcamp with them in 2009 that was successful!

**W:** We will do some **construction** (possibly, completing the school toilet), **organize cultural exchange activities with the local children/ youth** and any other work based on the local needs such as teaching English, environmental protection. We may also do Eco Sponge Action and/ or World Tanabata Action.

**S:** The future plan of international workcamps in Laos and the youth center. **Bring** some info.!

**A:** Guest house. SB! CV.

**L:** Agricultural village in Van Vieng district in the north part, surrounded by the river and mountains.

**T:** Vientiane (we will go to the project site by the rental bus for some hours together!)

**LA:** Exchange party, excursions, school visit, etc.

**SR: ONLY for Lao from AVAN, Korean from KNCU and Japanese from NICE**

**PF: 300 US\$** to be paid on your arrivals

**NICE-MCE/05 Bilateral 1 (\* Mongolia) 15/02-28/02 KIDS, SOCI, EDUC 18 vols. (0 int.)**

Organized together with **Mongolian workCamps Exchange (MCE)** and **Child Care Center of Mongolia (CCCM)** since 2001 and newly with Vision Youth Action (VYA) Taiwan. CCCM is the only

national orphanage in Mongolia where about 300 children live. In socialism age, they got a lot of support from the government, but not anymore since 1990, so they try to get donation and also grow vegetables in the suburb by organic farming where elder children take care in their summer vacation.

**W:** The main work will be to **teach English/ Japanese/ Taiwanese languages with enjoying songs and have other exchange with children.** We may also do Eco Sponge Action and/ or World Tanabata Action (sponges may be brought back to Japan/ Taiwan and sold there to support the life of the children).

**S:** The future plan of international workcamps in Mongolia and the orphanage. **Bring** some info.!

**A:** Apartment house (there are a few rooms for the volunteers) SB! CV.

**L:** Ulaanbaatar. One third of population in the country (2.4 millions) live in this capital city. Don't worry about the weather, we will work and live in a warm inside.

**T:** Ulaanbaatar (MCE will kindly pick volunteers up at the airport!)

**LA:** Cultural exchange program, excursions, etc.

**SR:** **ONLY for Mongolian from MCE, Taiwanese from VYA and Japanese from NICE**

**PF:** 160 Euros to be paid on your arrivals

### **NICE-UV/25 Kilimanjaro 1 (\* Tanzania) 15/02-28/02 ENVI 16 vols. (0 int.)**

**SR:** Bilateral workcamp only for Tanzanian from UV and Japanese from NICE

### **NICE-SF/07 Sadhana Forest (\* India) 21/02-06/03 ENVI 8 vols. (0 int.)**

Organized together with **Sadhana Forest (SF)** since 2007. SF started its ecological revival and sustainable living work in 2003. The dream is to ecologically transform 70 acres of severely eroded land into a vibrant **Tropical Dry Evergreen Forest (TDEF)**. This forest type is found only in Southern India and Sri Lanka and provides a rare biological richness due to its very high species abundance (over 1000 species of trees, shrubbery, and liana). We are also working to integrate a workcamp NGO in India.

**W:** We will do several environmental working. TDEF is now close to total extinction, as only 0.01% survives. The main action areas are planting the TDEF, water conservation, soil erosion control, and sustainable living education. Part of **Greening Asia**.

**S:** The future plan of SF and global cooperation. **Bring** some info.!

**A:** Huts and under large tents constructed from natural, local materials. Food is **vegan! SB! CV**

**L:** Auroville, an international community near Pondicherry, South India

**T:** Chennai (you need to arrive by a day before the 1st day and can leave after a day after the last day)

**LA:** Cultural exchange program, swimming, daily yoga class, cycling, meditation, tai-chi, shiatsu, etc.

**SR:** **Only for Indian from the local area and Japanese from NICE.** Respect to the local way and culture. You need to enjoy healthy life (**vegan, no smoking, no drinking!!**). The **middle term workcamp** will be also organized in 07/02-20/03.

**PF:** Actual food cost (about **42 US\$ for 2 weeks**) to be paid on your arrivals.

### **NICE/08 Rh. Dagan 1 (\* Malaysia) 24/02-07/03 CONS 18 vols. (0 int.)**

**SR:** Bilateral workcamp only for Malaysian from the local area and Japanese from NICE

### **NICE-IIWC/09 Tegalorejo 1 (\* Indonesia) 24/02-09/03 KIDS, SOCI 17 vols. (0 int.)**

**SR:** Bilateral workcamp only for Indonesian from IIWC and Japanese from NICE

### **NICE-IIWC/27 Semarang (\* Indonesia) 11/03-19/03 KIDS, SOCI 20 vols. (0 int.)**

**SR:** Group workcamp only for Indonesian from IIWC and Japanese from NICE

### **NICE/28 Kurikoma (Miyagi) 17/03-23/03 ENVI 12 vols. (0 int.)**

**SR:** Group workcamp only for Japanese from NICE

### **NICE/26 Kurobira (Yamanashi) 20/03-28/03 ENVI, AGRI 12 vols. (0 int.)**

**SR:** Group workcamp only for Japanese from NICE

### **NICE-HKIEd/24 Nagakute (Aichi) 30/03-11/04 ENVI, ELDE 17 vols. (0 int.)**

**SR:** Group workcamp only for Hong Kong from HKIEd Japanese from NICE

### **NICE-IJGD/38 Gohrde (\* Germany) 24/07-13/08 ENVI, RENO 15 vols. (0 int.)**

Newly organized together with **IJGD** and **EST**, the workcamp organizations in Germany and Estonia. This project is to do against the ever threatening climate collapse. The grounds attached to the Gohrde Train Station have an ecology teaching facility. As this area is quite known in the decade long debate

against nuclear waste transport and dumping, it is the perfect area to learn about political environment issues and get to know your political 'self'.

**W:** The main work will be to maintain the building and its grounds and maintain our natural resources.

**S:** Ecology, climate change, sustainability, political environmental issue

**A:** In an education center at a restored protected train station. CV

**L:** Gohrde. Lower Saxony; Luneburg 40 km, Hamburg 80 km.

**T:** Hamburg

**LA:** Excursions to Elbe River and forests.

**SR: ONLY for German from IJGD, Estonian from EST and Japanese from NICE**

### **NICE-IJGD/53 Harz (\* Germany) 07/08-28/08 ENVI 12 vols. (0 int.)**

Organized with **IJGD** and **INEX**, the workcamp organizations in Germany and Czech. The wooded areas in the upper Harz are protected areas, but also recreation areas. As large interconnected wooded areas, they are important in the quest for climate protection. Volunteers will be helping with nature and environment preservation jobs. NICE had a trilateral workcamp with IJGD in 2009 for the first time that was successfully done, so both have agreed to do it again!

**W:** The main work will be to help **protecting habitats for rare plants and animals**. Tasks are caring for deciduous trees, bodies of water, and repairing benches, huts, and signs along the path.

**S:** Ecology, climate change, sustainability

**A:** Shared rooms in a hikers' shelter. SB! CV.

**L:** Harz. Lower Saxony; 100 km south of Hannover, 70 km northwest of Gottingen.

**T:** Hannover

**LA:** Excursions to the mountains, forests.

**SR: ONLY for German from IJGD, Czech from INEX and Japanese from NICE**

### **NICE-IIWC/54 Tegalorejo 2 (\* Indonesia) 09/08-19/08 KIDS, SOCI 17 vols. (0 int.)**

**SR: Bilateral workcamp only for Indonesian from IIWC and Japanese from NICE**

### **NICE/61 Pereyaslav-K. (\* Ukraine) 15/08-29/08 RENO 16 vols. (0 int.)**

Newly organized together with **Alternative-V** and Pereyaslav-Khmelnysky Centre of Social Services for Youth. A village of the 17th–19th centuries is recreated, complete with gardens and flowers around the houses with whitewashed walls and thatch roofs. In the houses you find icons and decorative towels - exactly the way it looked in the times of old. On the territory of the open-air museum, we can find other museums, one of which exhibits stone idols of the Scythian times of centuries before Christ.

**W:** We will continue **the 13 year project, repairing the historical objects and cultural monuments**, participating in the work on the territory of the historic and cultural recreation area with the workers of the Museum of Ukrainian Folk Architecture.

**S:** Future plan of each organization and mutual cooperation. **Bring** some info.!

**A:** Dormitory of the local vocational school. SB! CV (MP for lunch).

**L:** 100 km to the south-east of Kyiv. This town has rich history and a lot of places to see. It is situated on the banks of one of the most beautiful rivers in Ukraine - the Dnieper.

**T:** Kyiv. Then, we will need to go to Pereyaslav-Khmelnysky station by bus.

**LA:** Visiting a lot of museums, bus trip to Kyiv, sunbathing and swimming in the river and the lake, etc.

**SR: ONLY for Ukrainian from ALT and Japanese from NICE**

### **NICE-BWCA/81 SSP (\* Bangladesh) 2 weeks in Sep. EDUC 16 vols. (0 int.)**

Organized together with **BWCA** (Bangladesh Work Camp Association) since 2005. BWCA was founded in 1958 organizing various types of workcamps. As a part of Sister NGOs Project of NVDA (Network for Voluntary Development in Asia), **SSP (Sister Schools Project)** team of NICE started to promote friendship and understanding among kids of different elementary schools in both countries since 03. They have decided to do it by a workcamp style from 2005 to develop the project more widely.

**W:** We will **visit two elementary schools in Dhaka and Chittagong Hill** to introduce Japanese schools and culture like games and cooking as well as passing the gifts from Japanese kids and making gifts for Japanese kids with them. SSP team **do the same things in Japan** before/ after the workcamp.

**S:** Future plan of SSP. **Bring** some info.!

**A:** Home-stay and dormitory. SB! CV and MP

**L:** Dhaka is a capital city. Chittagong Hill is in the southeastern part with minority race.

**T:** Dhaka (Local staffs will kindly pick volunteers up at the airport!)

**LA:** Exchange parties, sports, excursions, etc.

**SR: ONLY Bangladesh from BWCA and Japanese from NICE**

**NICE-UNA/69 Afan Forest (\* UK) 04/09-18/09 ENVI 10 vols. (0 int.)**

Organized together with **United Nations Association (UKA) Exchange** and **Afan Forest Park (AFP)** since 2007. This is a part of **Sister NGOs Project** to promote learning and cooperation among NGOs in different countries but in the same theme (in this case, forest protection). AFP is the largest urban park in Europe (11.000 ha) and UNA has organized international workcamps there for many times. Last two years' cooperation was quite successful, so we will continue it this year!

**W:** We will do various types of conservation works such as **maintenance of the mountain trails** by cutting the glasses, leveling the soil, etc., so the nature can be well protected by the visitor. As some of Japanese vols. may come from the conservation group, they can also exchange practical know-how.

**S:** Future plan of each organization and mutual cooperation. **Bring** some info.!

**A:** Community center in the park. SB! CV

**L:** Neath Port Talbot, South Wales, which environment was polluted before, but recovered by the wonderful efforts of AFP and their cooperating organization/ volunteers!

**T:** Cardiff or London

**LA:** Excursion, exchange parties, cycling, etc.

**SR: ONLY for British (Welsh) from UNA and Japanese from NICE**

**NICE/72 Rh. Dagan 1 (\* Malaysia) 06/09-19/09 CONS 18 vols. (0 int.)**

**SR: Bilateral workcamp only for Malaysian from the local area and Japanese from NICE**

**Bilateral workcamp between MONGOLIAN & JAPANESE!!!**

**NICE-MCE/75 Bilateral 3 (\* Mongolia) 13/09-26/09 AGRI, EDUC, KIDS 16 vols. (0 int.)**

Organized together with **Mongolian workCamps Exchange (MCE)** and **Child Care Center of Mongolia (CCCM)** since 2001. For the background of MCE, see **NICE-MCE/05**. From 1990, Mongolia transferred into free market economy. Also from that, Mongolians started to study foreign, especially Japanese, histories and languages. CCCM has a organize vegetable field in the suburb where MCE has many workcamps in summer to weed. The vegetables are small, but has very strong tastes!

**W:** We will mainly **help harvest of vegetables with the children of CCCM orphanage**. Hard work! We will also organize some other activities such as exchange with the local university students studying Japanese with **teaching Japanese language course, history and exchange ideas**.

**S:** The future plan of international workcamps in Mongolia and the orphanage. **Bring** some info.!

**A:** Student house. SB! MP

**L:** Buhug (45 km from Ulaanbaatar) and Ulaanbaatar.

**T:** Ulaanbaatar (MCE will kindly pick volunteers up at the airport!)

**LA:** Cultural exchange program, excursions, etc.

**SR: ONLY for Mongolian from MCE and Japanese from NICE**

**Bilateral workcamp between MONGOLIAN & JAPANESE!!!**

**NICE-MCE/76 Bilateral 4 (\* Mongolia) 17/09-30/09 AGRI, EDUC, KIDS 16 vols. (0 int.)**

**Same as NICE-MCE/75: Bilateral 3.**

**< We also recommend workcamps in Mongolia, Indonesia, Taiwan & Malaysia! >**

We can **strongly recommend** the following organizations (we call "brother NGOs") since we co-organized the projects in their first few years when they started international workcamps in their countries and they are full of pure motivations to make a better world by international voluntary projects! For more information and applications, **please contact directly to them!!**

**MCE (Mongolian workCamps Exchange)** E-address: [mce-mn@magicnet.mn](mailto:mce-mn@magicnet.mn)

**IIRC (Indonesia International WorkCamp team)** E-address: [iiwcindonesia@hotmail.com](mailto:iiwcindonesia@hotmail.com)

**VYA (Vision Youth Action) Taiwan** E-address: [workcamp@vya.org.tw](mailto:workcamp@vya.org.tw)

**MOVE (Malaysian Organization of Voluntary Exchange)** E-address: [my\\_move05@yahoo.com](mailto:my_move05@yahoo.com)

MOVE has become totally independent from 2010 and is planning to have two workcamps:  
MOVE/01 Klang 1 01/08-14/08: Working with the Special School (mentally challenged children)



# Project 2: LMTV Projects

## (Long & Middle Term Voluntary projects: over 6 weeks)

NICE categorizes LMTV projects into following two:

- \* **LMTI (Long and Middle Term Individual voluntary projects):** LMTV projects where **one or two volunteers** stay and work in the same period.
- \* **LMTW (Long and Middle Term Workcamps):** LMTV projects where **more than two volunteers** stay and work together in the same period.

### 2-1) The common points (unless mentioned in each description of the detailed info.);

a) Age limit	From <b>18 (No maximum)</b>
b) Language	<b>English</b> and/ or <b>Japanese</b> (depending on the projects. See the detailed info.!)
c) Insurance	We provide small insurance <b>only for accidents during the projects IN JAPAN.</b>
d) Accommodations	Basic, but enjoyable enough. But in many of LMTI, we provide a single room!

### 2-2) Application procedure

#### Step 1: Send application: through the partners!!

All applicants need to send the **application forms with motivation letters**. Non-Japanese volunteers living outside Japan need to apply **through our partner NGOs** of their countries (if your country is in Asia-Pacific and has no such NGOs, then you need to apply through **NVDA** (Network for Voluntary Development in Asia) <http://www.nvda-asiapacific.org/>).

Only if you are Japanese or live in Japan for a year or more, you can apply to NICE directly. Ask [LM-in@nice1.gr.jp](mailto:LM-in@nice1.gr.jp) for more info., then we will send you the guidance (procedure, fee, etc.) and the form.

#### < How much should volunteers pay? >

**Volunteers need to pay the travel cost to/ from the projects & the following Program fee while meals and accommodation during the projects are provided by NICE & the local partners;**

- a) From the NGOs charging **no fee** in their LMTV projects to NICE vols.: **No fee**
- b) From the NGOs charging **some fee** in their LMTV projects to NICE vols. or having no LMTV projects to host NICE vols.: **Program fee of 10,000 yen per one month To be paid on their arrivals**

- \* There is also a **participation fee** in some projects outside Japan (mentioned in each project description).
- \* Some projects in Japan provide **pocket money** (mentioned in each project description).

#### Step 2: Phone Interview (only for some LMTI)

If you apply for LMTI which requires **speaking GOOD Japanese**, you will need to call the **NICE office** to have phone interview. Calling date/ time and the phone number will be informed by NICE to your sending NGO right after NICE will have received your application form.

#### Step 3: Acceptance

Soon after having got the answer from the local host, NICE will inform your sending NGO whether you can be accepted or not by e-mail (Acceptance Letter, Seminars info. and NICE Volunteers' Guide will be also sent if you are accepted). It usually takes **1-2 weeks** (in some cases, even **3-4 weeks!**).

#### Step4: Book the flights as soon as being accepted and do other preparation!

**Don't wait** for the Information Sheets, otherwise you may miss economical flights!

If the final destination of your flight is not Tokyo/ Osaka, you need to book the flight to make stop-over in Tokyo or Osaka to join Preparation and Evaluation Seminars. You need to arrive at Tokyo/ Osaka by the day before the Seminars start and it is quite possible to stay in the houses of NICE members if you ask us early enough! Volunteers should not expect so much time for sightseeing during the projects, so if you want to do it, please take enough days before/ after the projects!

You can do any other preparation such as studying Japanese language/ culture/ history, etc.

## < About VISA for Japan >

Unfortunately, **we do not have any visa category for volunteer activities in Japan**, but don't worry, you are NOT illegal to stay in Japan for volunteering even with **tourist visa!**

**\* If you can come to Japan as a tourist without visa (from most of western/ central European countries, USA, Canada, Korea, Taiwan, Hong Kong, Singapore, Australia, NZ, many of Latin America, etc.)**

You will need to join the program as a tourist (usually, you can stay in Japan for 3 months. So, **you can apply for a program for 3 months in maximum (but those from Mexico, Austria, Switzerland, Ireland, UK, Germany can stay for 6 months in maximum)**. Some people have got another 3 months stay by going to the neighboring country such as Korea and Taiwan though we are not sure if it is always possible. Some nationalities (**Germany, France, UK, Korea, Canada, Australia, NZ, Taiwan and Hong Kong**) can try to get **working holiday visa for one year!!**

**\* If you need our visa invitation letter to come to Japan (from most of south/ southeast Asia, Africa, Eastern Europe, some of Latin America, etc.)**

NICE will send you the invitation letter to your sending NGO and then, you will need to apply for visa to the Japanese embassy in your country with it. The maximum length may be for 3 months.

## **Step 5: The detailed information of the project**

By **1 month before** the project will start, volunteers will receive "**Information Sheets**" (details of the project, what to bring, the meeting point, how to get there, etc.).

## **Step 6: On arrival program**

NICE organizes Preparation Seminars for LMTV (LMTI/ LMTW) for Japanese/ foreign outgoing/ incoming volunteers together with Evaluation Seminars where **all volunteers need to join!**

There will be the Seminars also around Osaka which info. will be sent to the vols. upon their requests.

## **< List of Preparation/ Evaluation Seminars >**

Code	Name	Location	Dates (for 2010)	Pax
NICE/PES-K01	Jizen/ Jigo Kenshu - Kanto 1	Around Tokyo	Noon 22/01 – Noon 24/01	20-40
NICE/PES-K02	Jizen/ Jigo Kenshu - Kanto 2	Around Tokyo	Noon 26/02 – Noon 28/02	20-40
NICE/PES-K03	Jizen/ Jigo Kenshu - Kanto 3	Around Tokyo	Noon 26/03 – Noon 28/03	20-40
NICE/PES-K04	Jizen/ Jigo Kenshu - Kanto 4	Around Tokyo	Noon 16/04 – Noon 18/04	20-40
NICE/PES-K05	Jizen/ Jigo Kenshu - Kanto 5	Around Tokyo	Noon 14/05 – Noon 16/05	20-40
NICE/PES-K06	Jizen/ Jigo Kenshu - Kanto 6	Around Tokyo	Noon 18/06 – Noon 20/06	20-40
NICE/PES-K07	Jizen/ Jigo Kenshu - Kanto 7	Around Tokyo	Noon 09/07 – Noon 11/07	20-40
NICE/PES-K08	Jizen/ Jigo Kenshu - Kanto 8	Around Tokyo	Noon 06/08 – Noon 08/08	20-40
NICE/PES-K09	Jizen/ Jigo Kenshu - Kanto 9	Around Tokyo	Noon 10/09 – Noon 12/09	20-40
NICE/PES-K10	Jizen/ Jigo Kenshu - Kanto 10	Around Tokyo	Noon 29/10 – Noon 31/10	20-40
NICE/PES-K11	Jizen/ Jigo Kenshu - Kanto 11	Around Tokyo	Noon 03/12 – Noon 05/12	20-40

**Pax:** Total number of the participants expected (Japanese/ foreign, outgoing/ incoming vols. plus staff)

**Program:** \* Workshops (setting up the goals, "my expectation, fear and contribution", planning projects)

\* Orientation (advice from the staff/ ex. volunteers, questions and answers, etc.)

\* Games, (in some cases) voluntary work, cooking, party, discussion, etc.

**Fee: 2,000 yen** (as the part of cost of meals, accommodation and meeting rooms during the program)

Transportation to/ from the place is not included and should be paid by the vols. by themselves.

## **Step 7: Joining the project!**

You will stay and work with your local hosts (and other vols. in some projects). Have a fruitful stay!

## **Step 8: Evaluation Seminar**

As mentioned in Step 6, **all vols. also need to join the Evaluation Seminar** (as listed above) that will be **done together with the Preparation Seminar** in the same dates and places. During the Seminar, vols. will share positive/ negative impact of their service to both local communities and their own personal development. Then, they will also share the future proposals to their projects as well as their next life plan with filling in the evaluation form and if possible, making the Project report with some pictures. You are also expected to advise the vols. of Preparation Seminar and surely, can have fun by all together!

**< To join LMTV Projects all over the world >**  
(organized by the partner NGOs)

**1) Where and When organized?**

NICE introduces about **300 projects** in **30 countries** organized by the **partner NGOs**.  
The projects are held **all through the year**.

**2) Who can apply (through NICE)?**

**Japanese citizen** or other citizens who are **living in Japan for a long time (for a year or more)**.  
If you are **NOT** in the above criteria, you need to apply **through our partner NGO in your country**.

\* If your country is in Asia-Pacific and has no such NGOs, then you need to apply through  
**NVDA (Network for Voluntary Development in Asia)** <http://www.nvda-asiapacific.org/>

**3) How can I apply and how much should I pay?**

Ask [LM-out@nice1.gr.jp](mailto:LM-out@nice1.gr.jp) for more info., then we will send you the guidance and the form.

**2-3) Summery List (There may be some more!)**

Code	Name	Location	Dates	Types	Vols.
<b>&lt; LMTI (Long &amp; Middle Term Individual voluntary projects) &gt;</b>					
NICE/LMTI-01B	Abukuma 2	Fukushima	26/02-16/05 (or more)	ENVI,KIDS	2
NICE/LMTI-01C	Abukuma 3	Fukushima	26/03-20/06 (or more)	ENVI,KIDS	2
NICE/LMTI-01D	Abukuma 4	Fukushima	16/04-11/07 (or more)	ENVI,KIDS	2
NICE/LMTI-01E	Abukuma 5	Fukushima	14/05-08/08 (or more)	ENVI,KIDS	2
NICE/LMTI-01F	Abukuma 6	Fukushima	18/06-12/09 (or more)	ENVI,KIDS	2
NICE/LMTI-01G	Abukuma 7	Fukushima	10/09-05/12 (or more)	ENVI, KIDS	-
NICE/LMTI-02A	Ikata 1	Ehime	22/01-18/04 (or more)	AGRI, HERI	2
NICE/LMTI-02B	Ikata 2	Ehime	26/02-16/05 (or more)	AGRI, HERI	2
NICE/LMTI-02C	Ikata 3	Ehime	26/03-20/06 (or more)	AGRI, HERI	2
NICE/LMTI-02D	Ikata 4	Ehime	16/04-11/07 (or more)	AGRI, HERI	2
NICE/LMTI-02E	Ikata 5	Ehime	14/05-08/08 (or more)	AGRI, HERI	2
NICE/LMTI-02F	Ikata 6	Ehime	18/06-12/09 (or more)	AGRI, HERI	2
NICE/LMTI-02G	Ikata 7	Ehime	09/07-03/10 (or more)	AGRI, HERI	2
NICE/LMTI-02H	Ikata 8	Ehime	06/08-31/10 (or more)	AGRI, HERI	2
NICE/LMTI-02I	Ikata 9	Ehime	10/09-05/12 (or more)	AGRI, HERI	2
NICE/LMTI-02J	Ikata 10	Ehime	01/10-26/12 (or more)	AGRI, HERI	2
NICE/LMTI-02K	Ikata 11	Ehime	29/10-23/01 (or more)	AGRI, HERI	2
NICE/LMTI-02L	Ikata 12	Ehime	03/12-27/02 (or more)	AGRI, HERI	2
NICE/LMTI-03A	Hinode 1	Tokyo	22/01-18/04 (or more)	SOCI	1
NICE/LMTI-03B	Hinode 2	Tokyo	26/02-16/05 (or more)	SOCI	1
NICE/LMTI-03C	Hinode 3	Tokyo	26/03-20/06 (or more)	SOCI	1
NICE/LMTI-03D	Hinode 4	Tokyo	16/04-11/07 (or more)	SOCI	1
NICE/LMTI-03E	Hinode 5	Tokyo	14/05-08/08 (or more)	SOCI	1
NICE/LMTI-03F	Hinode 6	Tokyo	18/06-12/09 (or more)	SOCI	1
NICE/LMTI-03G	Hinode 7	Tokyo	10/09-05/12 (or more)	SOCI	1
NICE/LMTI-03H	Hinode 8	Tokyo	03/12-27/02 (or more)	SOCI	1
NICE/LMTI-04	Kawaba	Gunma	18/06-31/08	KIDS, AGRI	1
NICE/LMTI-05	Maki	Nagano	18/06-12/09 (or more)	AGRI, SOCI	2
NICE/LMTI-06A	Showa-mura 1	Fukushima	18/06-12/09 (or more)	AGRI, CULT	3
NICE/LMTI-06B	Showa-mura 2	Fukushima	09/07-03/10 (or more)	AGRI, CULT	3
NICE/LMTI-06C	Showa-mura 3	Fukushima	06/08-31/10	AGRI, CULT	3
NICE/LMTI-07	Uonuma	Niigata	09/07-03/10 (or more)	ENVI, KIDS	2
NICE/LMTI-08	Nabari	Mie	09/07-03/10	ENVI	1
<b>&lt; LMTW (Long &amp; Middle Term Workcamps) &gt;</b>					
NICE/LMTW-01	Sadhana Forest	* India	07/02-20/03	ENVI	-
NICE/LMTW-02	Kilimanjaro	* Tanzania	07/02-20/03	ENVI	#4
NICE/LMTW-03	Tochigi 1	Tochigi	11/05-31/07	ENVI	2

NICE/LMTW-04	Tochigi 2	Tochigi	07/09-26/11	ENVI	2
NICE/LMTW-05	Onuma	Hokkaido	09/07-03/10	ENVI	3
NICE/LMTW-06	Kurogi	Fukuoka	01/09-19/11	ENVI, AGRI	4

\* "Vols." are the numbers of **international volunteers** to be recruited.

For the projects with "#", applications should be sent to the co-organizing (hosting) NGOs.

\* **The period includes the dates of Preparation/ Evaluation Seminar.**

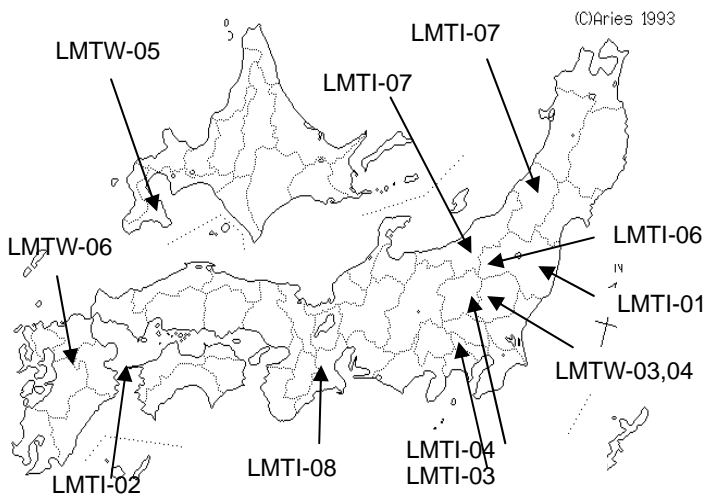
\* **IMPORTANT!! If you want to finish the project in other period (either shorter or longer), please choose among the following dates and clearly write on your application form;**

**28/02, 28/03, 18/04, 16/05, 20/06, 11/07, 08/08, 12/09, 31/10, 05/12**

ARCH: Archaeology	ENVI: Environmental	MEDI: Medical
AGRI: Agriculture	ELDE: Work with Elderly	PEACE: Peace
ARTS: Arts	FEST: Festival	RELIEF: Disaster Relief
CONS: Construction	HERI: Cultural or Heritage	RENO: Restoration, Renovation
DISA: Disabled ("Challenged")	KIDS: Work with Kids	SOCI: Social
EDUC: Teaching, Awareness	MANU: Manual	STUDY: Study, Research

\* "Social" means work with disadvantaged people besides ELDE and DISA (e.g. Orphans, Refugees, Homeless) OR work with various types of such people with special needs.

### < Location of the projects in Japan >



### 2-4) General Qualification;

- a) **Best motivation for the voluntary work** (special good skills and power are not necessary)
- b) **Responsibility to keep rules** of NICE & the partners and **cooperation** to run the projects
- c) **Best efforts to understand and respect cultures** both of the hosts and other volunteers
- d) **Open mind to make friends** with trying to speak English (in the groups) and the local language
- e) **To adapt and enjoy simple conditions** of the living such as food and accommodation

Though it'd be very funny and dramatic time for you, if your motivation is **only for enjoying holidays, please don't apply** and do just travel. If it is more **for voluntary service** to make a better world and **friendship** with local people and other volunteers, you are **super welcome!!**

### 2-5) Detailed project Information (LMTI);

After the **backgrounds** (partners, aims and histories) of the projects;

<b>W</b> : Voluntary work	<b>T</b> : Terminal (The closest big international airport)
<b>S</b> : Study theme	<b>LA</b> : Leisure Activities
<b>A</b> : Accommodation	<b>SR</b> : Special Remarks (if any)
<b>L</b> : Location	<b>PF</b> : Participation Fees (if any)

\* Number of volunteers = the number the host organization need at the same period.

\* **The period includes the dates of Preparation/ Evaluation Seminar.**

\* **IMPORTANT!! If you want to finish the project in other period (either shorter or longer), please choose among the following dates and clearly write on your application form;**

**28/02, 28/03, 18/04, 16/05, 20/06, 11/07, 08/08, 12/09, 31/10, 05/12**

<b>NICE/LMTI-01B</b>	<b>Abukuma 2 (Fukushima)</b>	<b>26/02-16/05</b>	<b>ENVI, KIDS</b>	<b>2 vols.</b>
<b>NICE/LMTI-01C</b>	<b>Abukuma 3 (Fukushima)</b>	<b>26/03-20/06</b>	<b>ENVI, KIDS</b>	<b>2 vols.</b>
<b>NICE/LMTI-01D</b>	<b>Abukuma 4 (Fukushima)</b>	<b>16/04-11/07</b>	<b>ENVI, KIDS</b>	<b>2 vols.</b>
<b>NICE/LMTI-01E</b>	<b>Abukuma 5 (Fukushima)</b>	<b>14/05-08/08</b>	<b>ENVI, KIDS</b>	<b>2 vols.</b>
<b>NICE/LMTI-01F</b>	<b>Abukuma 6 (Fukushima)</b>	<b>18/06-12/09</b>	<b>ENVI, KIDS</b>	<b>2 vols.</b>
<b>NICE/LMTI-01G</b>	<b>Abukuma 7 (Fukushima)</b>	<b>10/09-05/12</b>	<b>ENVI, KIDS</b>	<b>2 Japanese Only!</b>

Host organization is **Abukuma Nature School Network (ANSN)**. Their theme is **learning from soil and nature, and live together!** And to make it into practice, ANSN organizes many programs for ranging from kids to adults such as a nature school, classrooms for farmers, foresters and organic farming groups, visiting local schools, 2 weeks nature camps for kids, etc. They are hoping to make these programs more active and make better relationship between local community and organization.

**W:** You will **plan, prepare and organize the above events and programs** with other staff members of ANSN. You may do some **agricultural and forest work** in the land of ANSN that are also very important, as well as organize some activities with the local elementary school and community.

**A:** **Single room** of the nature school. **Cooked by vols.** Pocket money is **25,000 yen** per month.

**L:** **Small village in the forest area, the population is about 5,000**, surrounded by rich nature. The temperature in the winter can be minus 5 to 10 though the inside buildings are warm enough!

**T:** Tokyo (2 and a half hours from Tokyo by bus)

**LA:** Participation in the local events, many opportunities to learn the local wisdom, etc.

**SR:** **Speaking good Japanese, strong motivation to work with the host and live in the remote area with a lot of nature, respect to the local custom and life, flexibility, friendliness, positive mind and those who likes children.** Experience of similar types of work is welcome! There will be a short term international workcamp with 6 vols. in 20/07-06/08.

<b>NICE/LMTI-02A</b>	<b>Ikata 1 (Ehime)</b>	<b>22/01-18/04</b>	<b>AGRI, HERI</b>	<b>2 vols.</b>
<b>NICE/LMTI-02B</b>	<b>Ikata 2 (Ehime)</b>	<b>26/02-16/05</b>	<b>AGRI, HERI</b>	<b>2 vols.</b>
<b>NICE/LMTI-02C</b>	<b>Ikata 3 (Ehime)</b>	<b>26/03-20/06</b>	<b>AGRI, HERI</b>	<b>2 vols.</b>
<b>NICE/LMTI-02D</b>	<b>Ikata 4 (Ehime)</b>	<b>16/04-11/07</b>	<b>AGRI, HERI</b>	<b>2 vols.</b>
<b>NICE/LMTI-02E</b>	<b>Ikata 5 (Ehime)</b>	<b>14/05-08/08</b>	<b>AGRI, HERI</b>	<b>2 vols.</b>
<b>NICE/LMTI-02F</b>	<b>Ikata 6 (Ehime)</b>	<b>18/06-12/09</b>	<b>AGRI, HERI</b>	<b>2 vols.</b>
<b>NICE/LMTI-02F</b>	<b>Ikata 7 (Ehime)</b>	<b>09/07-03/10</b>	<b>AGRI, HERI</b>	<b>2 vols.</b>
<b>NICE/LMTI-02G</b>	<b>Ikata 8 (Ehime)</b>	<b>06/08-31/10</b>	<b>AGRI, HERI</b>	<b>2 vols.</b>
<b>NICE/LMTI-02H</b>	<b>Ikata 9 (Ehime)</b>	<b>10/09-05/12</b>	<b>AGRI, HERI</b>	<b>2 vols.</b>
<b>NICE/LMTI-02I</b>	<b>Ikata 10 (Ehime)</b>	<b>01/10-27/12</b>	<b>AGRI, HERI</b>	<b>2 vols.</b>
<b>NICE/LMTI-02J</b>	<b>Ikata 11 (Ehime)</b>	<b>29/10-23/01</b>	<b>AGRI, HERI</b>	<b>2 vols.</b>
<b>NICE/LMTI-02K</b>	<b>Ikata 12 (Ehime)</b>	<b>03/12-27/02</b>	<b>AGRI, HERI</b>	<b>2 vols.</b>

Host organization is **Kikuya Community Group (KCG)**, formed by the local young people to think of the future of their small village. Ikata is famous for its main industry of oranges farming, but has been facing **depopulation**, lack of workers and ageing society since most of young people leave the town. So, the number of abandoned orange farms is increasing and the town is losing its tradition, life, custom and scenery. KCG strongly hopes to host vols. to work together to animate the town and revive the farms.

**W:** You will **help orange farming** (harvesting, taking care of trees, etc, depend on season!), **support local youth club (Taking care of elderly people and kids etc), cultural and language classes** for local people and kids, and **create new activities to animate the town.**

**A:** **Share room** at the **volunteers' house.** Cooked by vols. Pocket money is **20,000 yen** per month.

**L:** In the edge of Sata Peninsula, surrounded by the sea, so fishing is also famous. There are only 30 houses in this community. The climate is relatively warm though it can be cold in winter.

**T:** Matsuyama. From Matsuyama, about 2 hours by train and bus

**LA:** Participation in the local events, exchange with the local groups, etc.

**SR:** **Speaking good Japanese, strong motivation to work with the host, respect to the local custom and life, open mind and flexibility.**

<b>NICE/LMTI-03A</b>	<b>Hinode 1 (Tokyo)</b>	<b>22/01-18/04</b>	<b>SOCI</b>	<b>1 vol.</b>
<b>NICE/LMTI-03B</b>	<b>Hinode 2 (Tokyo)</b>	<b>26/02-16/05</b>	<b>SOCI</b>	<b>1 vol.</b>
<b>NICE/LMTI-03C</b>	<b>Hinode 3 (Tokyo)</b>	<b>29/03-20/06</b>	<b>SOCI</b>	<b>1 vol.</b>
<b>NICE/LMTI-03D</b>	<b>Hinode 4 (Tokyo)</b>	<b>16/04-11/07</b>	<b>SOCI</b>	<b>1 vol.</b>
<b>NICE/LMTI-03E</b>	<b>Hinode 5 (Tokyo)</b>	<b>14/05-08/08</b>	<b>SOCI</b>	<b>1 vol.</b>
<b>NICE/LMTI-03F</b>	<b>Hinode 6 (Tokyo)</b>	<b>18/06-12/09</b>	<b>SOCI</b>	<b>1 vol.</b>
<b>NICE/LMTI-03G</b>	<b>Hinode 7 (Tokyo)</b>	<b>10/09-05/12</b>	<b>SOCI</b>	<b>1 vol.</b>
<b>NICE/LMTI-03H</b>	<b>Hinode 8 (Tokyo)</b>	<b>03/12-27/02</b>	<b>SOCI</b>	<b>1 vol.</b>

Host organization is Hinode Taiyo no Ie (HTI), **home for mentally challenged**, that was used to be isolated from the local community since the locals were afraid & against to its construction in the late 80s. We have been creating a **"bridge" between locals & HTI** by the workcamps through which the locals have met the challenged people and removed prejudice step by step. They have Samurai house that is used for a training of vols. and a rental facility for organization of conferences, gatherings, lodging etc.

**W:** You will **advertise for groups** to use Samurai house (updating the website, to make a brochure, etc.), **coordinate to host the groups, plan new hosting programs, assist other staff members** to help the daily life and work of the mentally disadvantaged people.

**S:** Management of welfare facilities, mixture between social welfare and ecology.

**A:** **Single room of Samurai house** (very traditional Japanese house!) where **meals are often provided** (No vegetarian!). Pocket money is **30,000 yen** per month

**L:** Mountain side with natural surroundings, about 50 km west of Tokyo.

**T:** Tokyo (90 min by local train)

**LA:** Participation in the seminar for volunteer coordinators, exchange with the local people, etc.

**SR:** **Speaking good Japanese, strong motivation to work with the host, respect to the local custom and life, flexibility, friendliness, positive mind and those who likes children and also creates new activities.** Experience of similar types of work is welcome! There will be a short term international workcamp with 8 vols. in 16/08-30/08.

#### **NICE/LMTI-04 Kawaba (Gunma) 18/06-31/08 KIDS, AGRI 1 vol.**

Host organization is a NPO, **Aruking Club (AC)**. Their aim is to make people know different face of nature... beautiful nature, strong nature, strict nature and generous nature. As a bridge between people and nature, they **organize a lot of outdoor activities like a 2 weeks summer camp for kids**, nature walk, nature watching, outdoor sports, etc. Also they have organic vegetable fields and domestic animals (cow, sheep, etc). They run it and also make opportunities for people to experience agriculture.

**W:** You will **support to organize the outdoor, activities and summer camps, working in the organic farm**, take care of domestic animals and **maintain and clean the lodge** and its area.

**A:** **Single room** of the lodge. **Cooked by vols. with local staff.** Pocket money is **30,000 yen** per month.

**L:** North of Tokyo. About 150 km of Tokyo. 81% of the village is occupied by the forest and there are 5 clean rivers are going through. AC is located in the very isolated, but very beautiful area.

**T:** From Tokyo, about 2 hours by train & bus

**SR:** **Speaking good Japanese and some English.** Strong interests and motivation working in nature. Willing to stay in the isolated area. The project will be **finished on 31 Aug. and there will be 10 days till the Evaluation Seminar** (you can travel around Japan and also there are some possibilities to join other weekend or short term workcamps as well as staying in NICE members' houses if you want).

#### **NICE/LMTI-05 Maki (Nagano) 18/06-12/09 AGRI, SOCI 2 vols.**

Host organization is **Maki Farm of Kyodo Gakusha (KG)**. KG is a NPO running **5 organic farming communities in Japan** where people with various backgrounds such as mentally disadvantaged, those who want to learn farming, etc. in order to change our society from competitive to cooperative. Maki Farm has 5-10 members and is located in a very isolated area (not accessible for cars and we have to walk 4 km in the mountains), so once it became **an abandon village in 1970s**.

**W:** We will help their **organic farming** (weeding in rice and vegetable fields, planting vegetables, taking care of goats and chicken, etc.) and also **carry the things from the town, renovate the trails, help their house work, etc.** Be ready to work for quite a long time (**05:30-18:00** with some brakes) and **hard**.

**A:** Building for volunteers in the farm, cooking as a group by turn (Vegetarian is possible!)

**L:** **Very isolated**, but beautiful village near "Japanese Northern Alps". About 900 meters asl. There are something remained here that most of Japanese areas have lost in modernization.

**T:** From Tokyo, 4 hours by express train or 8-10 hours by bus and train.

**SR:** **Speaking good Japanese (common language will be Japanese), and strong motivation to work and**

enjoy simple life in the isolated area and respect to the local culture and way of the local organization! Skills of agriculture or construction can be useful! There will be a short term international workcamp with 8 vols. in 24/06-07/07.

**NICE/LMTI-06 A Show-mura 1 (Fukushima) 16/06-12/09 AGRI,CULT 3 vols.**

**NICE/LMTI-06 B Show-mura 2 (Fukushima) 09/07-03/10 AGRI,CULT 3vols.**

**NICE/LMTI-06 C Show-mura 3 (Fukushima) 06/08-31/10 AGRI,CULT 3vols.**

Host organization is **Choma-Club** (CC) since 2008. CC is a local NPO to organize a lot of projects for community development and youth-empowerment. Showamura is a rural village where over 50% are elderly and they face depopulation of their youth. There is a lack of communication between the generations so the NPO 'Choma Club' wants energize the community with innovative ideas by hosting a workcamp to allow for interaction and exchange with youth.

**W:** 1) **Helping vegetable and flower farms.** Cutting grasses around rice field, 2) **Exchange with the local elementary students.** Participating in several local events and 3) **Short term workcamp leader!** During the project, there will be 4 workcamps.

**A:** A building in the center of Choma club.

**L:** A small village in the forest area, the population is about 19,000. There is a hot spring.

**T:** From Tokyo, about 4 hours by train and bus.

**SR: Speaking good Japanese!** Interested in environmental issues and agriculture. Motivation to work hard, open mind, cooperation with others.

**NICE/LMTI-07 Uonuma (Niigata) 09/07-03/10 ENVI, KIDS 2 vols.**

Host organization is **Uonuma-Denshukan(UD)**. Fukuyama is a rural village surrounded by an abundance of nature and has been facing serious **depopulation problems**. UD wants to cheer the area by projects. UD recommends immigration of people to the area from urban area. UD has been trying to energize the area and also runs various kinds of ecological education programs mainly for kids to let them know the rich nature of Fukuyama.

**W:** Main work is **agricultural work in rice field (cutting grass etc.) and forestly work (cutting grass and trees)** in the land of UD, that are also very important, as well as organize some activities with kids and local community. We will support to organize outdoor, activities and summer camps. We will do a variety of activities with the local community.(Ex.local festivals, Making indigenous products!)

**S:** Effective cases to activate depopulated areas in each country. **Bring** some info.!

**A:** The abandoned school buildings.

**L:** Mountainous, agricultural town about 170 km north of Tokyo. Famous for the best **sake** and rice!

**T:** Tokyo (3 hours by bullet train or 5 hours by slow train)

**LA:** Exchange parties and excursion etc.

**SR: Speaking good Japanese,** and high motivation to work and enjoy simple life in the isolated area and respect to the local culture and way of the local organization!

**NICE/LMTI-08 Nabari (Mie) 09/07-03/10 ENVI 1 vol.**

Host organization is '**Akame no Mori wo Mamoru kai**', a local environmental NPO, since 1998. In an area between Osaka and Nagoya, there were plans for a golf course and disposal of industrial garbage, but the local community has stopped them with the '**Woods Trust**' movement. The group was formed in 1996 to collect donations to buy and protect the land, to build an eco-resort to enjoy nature, to maintain forests, to create a pond for dragonflies, etc...

**W:** We will do a variety of different work to care of the forest such as cutting trees, cutting branches, maintaining the footpaths, etc... They organize some events(Ex. To collect edible wild plants, nature observation) in their Field. They also open up new projects(apiculture, biomass energy etc.) We will help their activities.

**S:** Local participation to protect nature. **Bring** some info.!

**A:** The pension named 'Eco Resort Akame'.

**L:** About 60 km east of Osaka. There are famous falls nearby that many hikers visit. The climate in this season is relatively cold; so don't forget to bring warm clothes.

**T:** Osaka or Nagoya (1 hour by train from both).

**LA:** Excursion, exchange parties, visiting schools, exchange with elderly people of the eco-resort, etc...

**SR: Speaking good Japanese, strong motivation to work with the host, respect to the local custom and life, open mind and flexibility.** There will be an international workcamp in **01/03-14/03**.

## 2-6) Detailed project Information (LMTW);

**BE CAREFUL!! Bilateral workcamp only for Indian & Japanese!!**

**NICE/LMTW-01 Sadhana Forest (\* India) 07/02-20/03 ENVI 6 vols.**

**SR: ONLY Indian from the local area and Japanese from NICE**

**Applications for international volunteers should be sent to UV!!**

**NICE/LMTW-02 Kilimanjaro (\* Tanzania) 07/02-20/03 ENVI 18 vols. (4 int.)**

Host organization is **UVIKIUTA (UV)**. UV is established in 1994 and aims at the promotion of international understanding, peace, human rights, the culture, the environmental safety and sustainable development through the volunteer work and acts. The local people in the village in Kilimanjaro begin to notice the importance of the environmental protection gradually. There will be 8 Japanese, 8 Tanzanian and 3 from other countries.

**W:** We will do environmental enlightening activity for a community and various schools in the region and planting trees. We will also organize sports and games for children environmental clubs within the local schools.

**A:** Simple facility.

**L:** Kilimanjaro

**T:** Dar es Salaam

**LA:** Hiking to Kilimanjaro forest, visit Local chief's place, cultural tourism and visit Lake Manyara National Park and Ngorongoro crater conservation area to view wild animals and other biodiversity.

**SR:** Respect to the local way and culture. There will be short term Japanese and Korean and Tanzanian trilateral workcamp for 22 vols. in 14/02-27/02. **please contact with UV: [uvikiuta83@yahoo.com](mailto:uvikiuta83@yahoo.com)**

**PF:** Volunteers will pay some participation fee on your arrivals. Please ask UV us if you are interested.

**NICE/LMTW-03 Tochigi 1 (Tochigi) 11/05-31/07 ENVI 6 vols. (2 int.: Asian Only!!)**

**NICE/LMTW-04 Tochigi 2 (Tochigi) 07/09-26/11 ENVI 6 vols. (2 int.: Asian Only!!)**

Host organization is **Tochigi Conservation Corp (TCC)**. Conservation Corps is the community service program in USA where 10-20 youth work for local development and environment for long time as a team. About 25,000 people participate every year that make difference in both the communities and the participants. It is expected to create similar programs in Japan, too. TCC was created to make Conservation Corps program in Japan and started it in 2009. So, this is the second project!!

**W:** 1) Creating kindergarten friendly forest. We will work with a Kindergarten in Utsunomiya city, they have their own forest near the kindergarten, but it is not cared. So we will make plans and work for creating a friendly forest for kids so that they can enjoy nature, learn from nature. 2) Forest and Nature protection project. We will work for protecting forest and local nature. We take care of forests, removing naturalized plants, bamboo, etc. 3) Organizing volunteer program and events. We will plan volunteer programs and events so that we can involve people living in the city in this activity.

**A:** Meizai-an, very big beautiful house. You will have your own room, cooking by ourselves by turn. All facilities are prepared.

**L:** Mashiko town is located in East part of Tochigi prefecture. Mashiko is famous for potter, and the atmosphere of the town is artistic. There are some traditional heritages and traditional cultures are remained. The population of the town is about 25,000.

**T:** Here is about 40 minutes from Utsunomiya city by car.

**LA:** We will have time to learn leadership, NPO management, group work, that would useful for your future. Participating in local festival, events. Sightseeing, short trip ( Hot springs, famous places in this prefecture)

**SR:** Interests in Environment and local development. Liking to work outside. Flexibility and cooperation are required. **Speaking some - good Japanese. (We use Japanese mainly)**

**NICE/LMTW-05 Onuma (Hokkaido) 09/07-03/10 ENVI 6 vols. (3 int.)**

Host organization is Milestone 22, a local NGO to promote voluntary service and international exchange. Short term projects have been organized since 2004. Though Onuma lake has been a popular tourism spot for a long time because of its beautiful scenery, it has been **polluted** by over use of agricultural chemicals by cattle farming and erosion from abandoned forests with non-native trees. A leader of Fishermen's Cooperative has bought a forest and wants to revive it to original nature!

**W:** We will **cut alien trees and planting native trees** to create better forest around the lake. As raising awareness of locals is important, we will also work along the lake by **putting stones, check the**

**pollution and making charcoals** to purify the water. Also, volunteers will harvest tomato, potato, etc. Volunteer will join some local festivals to involve local people in this lake conservation movement.

**A:** Rental house near the lake.

**L:** South of Hokkaido island, in a national park near Hakodate city which is famous for romantic view in the night, especially for sweet couples!

**T:** Sapporo (3 hours by express train). From Tokyo, 10 hours by bullet train or 30 hours by ship.

**LA:** Excursion, exchange parties, home-stay, farming experience, school visit, sports, etc.

**SR:** **Speaking “good Japanese & some English” or “some Japanese & good English”.** Motivation to **actively work in the forests and with local people!** There will be two short term international workcamps in 23/07-30/07 & 05/09-19/09. Japanese language skill is not necessary though welcomed!

### **NICE/LMTW-06 Kurogi (Fukuoka) 01/09-19/11 ENVI, AGRI 8 vols. (4 int.)**

Host organization is International Working Holiday Committee since 2008. One of the committees is Sansonjuku (a NPO) which cares **forest and rice fields** by **the exchange programs between cities and the country side**. The rural areas in Japan has big problems such as **lacking of youth, increasing the number of abandoned fields**. So, they started an international working holiday program in 1997 with BTCV and repaired traditional stone fences and trails and they worked in the forest.

**W:** **1) To make footpath in the forest** (Main work), **2) Supporting agricultural work, forest work with local formers,** **3) Supporting to manage exchange center** and **4) Supporting international working holiday program**. They would like to develop these programs longer and deeper, so that they can work with the community better. They aim to develop this community and program sustainable with young people from the world to conserve this rich nature.

**A:** Egao no mori center (It was Kasahara-higashi elementary school until 2004)

**L:** Southern part of the Fukuoka prefecture. The Kurogi town is 135,49 km<sup>2</sup>. There are so many tee trees and terraced paddy fields.

**T:** Fukuoka airport (3 hours by express train). From Tokyo to Fukuoka airport, 1.5 hours by airplane or from Tokyo to Hakata station, 5.5 hours by Shinkansen.

**SR:** Interested in environmental issues and agriculture. Motivation to work hard, open mind, cooperation with others.

# Project 3: Weekend Workcamps

(= Very Short Term Workcamps for less than 7 days)

## 3-1) What are Weekend Workcamps?

- \* Voluntary service programs lasting **1-6 days** in community centers, environmental NGOs, etc.
- \* In many cases, working with the partner organizations of **short/ middle/ long term workcamps**.
- \* It is open to anybody (each of **NICE members** and students are about half of all vols.) and there are some foreign vols. (those who live in Japan or who will/ have join/ joined other projects of NICE).
- \* Planned and organized **by voluntary teams of NICE members** for each project

## 3-2) Where and When organized?

- \* We have projects organized most weekends **throughout the year**.
- \* The majority are held in and around **Tokyo and Osaka**.
- \* The project is usually planned **1-2 months beforehand**.
- \* We try to post the program information in English on our website though it sometimes cannot be updated promptly (if your friends can help translation, you can also get the most updated info. in our website in Japanese language. [http://nice1.gr.jp/ww/ww\\_schedule.html](http://nice1.gr.jp/ww/ww_schedule.html)). Otherwise, you can also **call the NICE office** (please avoid e-mails since the information is complicated to explain in writing).

The following are just examples of some of our weekend workcamp projects:

- A) Making snow statues at the festival, cutting trees in the forest**, etc. in Hokkaido, 3-4 times a year
- B) Activate the depopulated area** (helping the festival, farming, etc.) in Fukushima, 3-4 times a year
- C) Playing and organizing activities with kids** at the **orphanage** in Tokyo, every month
- D) Protecting sea turtles and wild birds** (making the fence, etc.) in Shizuoka, 3-4 times a year
- E) Organic farming in the tea farms and helping the tea festival** in Kyoto, 3-4 times a year
- F) Maintaining NICE Forest** (making the trails and charcoals, etc.) in Osaka, every month

You are also welcome to join our **Weekend Training Workcamps** (for Japanese volunteers who will join international workcamps abroad and in Japan).

**Program:** Voluntary works, cooking, games, discussions, orientation, etc. Speaking **ONLY in English!**

**Dates:** Several weekends in Feb. - Mar./ Jun. - Aug.

**Places:** Around Tokyo and Osaka (sometimes also around Fukuoka and Nagoya for Jun.-Aug.)

## 3-3) Who and how can I apply and how much?

General **qualifications** are same as Short Term Workcamps (See **page 7**).

You can apply **DIRECTLY to NICE** (the project leaders). There is no application form.

Some projects are open to non-Japanese speakers.

- \* The participation fee is usually **1,500 - 3,000 yen for the meals & accommodation per one night**.
- \* There is **no salary nor pocket money** paid.
- \* **Travel cost** to and from the projects must be paid by volunteers.
- \* We are **unable** to provide any insurance except for NICE members.



Forest work (Onuma, Hokkaido)



Tea harvest (Wazuka, Kyoto)



Xmas party (Koyama, Tokyo)

# Project 4: Group Workcamps

## - Let's organize together! -

### 4-1) What are Group Workcamps?

Workcamps **organized for specific groups** like schools, NGOs, student groups, companies, governments, local communities, etc.

Contents (types of works, places, periods, finance, types/ numbers of volunteers, etc.) just **depend on the needs of the groups and hosts.**

### 4-2) Why are they organized ?

There are **huge demands to input workcamp elements** (voluntary works and collective life) **in (mostly, existing) programs of the society** such as school/ company trips, training of youth/ new workers, seminars and language classes, exchange programs, etc.

We need **good training/ preparation** especially for those **who were not so motivated** in the beginning, but then why not to improve those programs by **utilizing our know-how and networks** for the better world! And we can **involve new kinds of people** who never apply alone or have no opportunities where else.

This can also be **fund raising** project if the group can use a lot of money for it!

### 4-3) Who can join/ send/ host?

Volunteers of the sending or both sides are **recruited as a group** (not individually from different routes) though there are two cases that all members of the groups automatically join or some ones of the groups join optionally.

Usually, workcamp NGOs in both sides **plan/ organize together and provide each leader.** It is also possible to do by 3 (or more) countries!

### 4-4) How to organize?

- 1) Sending org. makes draft plan with a group.
- 2) Sending org. propose it to the hosting org.
- 3) Hosting org. finds the local partners, modify the plan with them and answer to sending org.
- 4) Hosting & sending org. make an agreement.

\* There can be the other way that **hosts plan first** and then, try to find a group to come.

### 4-5) Where and When organized ?

As above mentioned, just up to agreements on both sides (the host and the coming group). It can be **any time & length** of a year.

**Anywhere** if the groups & the hosts like!  
**We can also host** your groups in Japan.

### ++Examples!



- 1) 8 days in Apr. since 2002 near Sydney in **Australia** where 15 **students of the vocational school** worked in the **aboriginal community (organized together with IVP Australia).**
- 2) 6 days in Aug. 2004-06 in the wild bird park of Tokyo, **Japan** with 12 **physically challenged people from US** as a part of their 3 weeks stay **(with Mobility International USA).**
- 3) 4 days in Jul. 2004 in **Mongolia** where 70 **adult workers** from Osaka, Japan worked in the farm and built a house for **the orphanage (with MCE Mongolia).**
- 4) 7 days in Feb. 2008 in Jog Jakarta, **Indonesia** where 15 youth from the football club **organized sports activities** for the children **(with IIWC Indonesia).**
- 5) 15 days in Mar. 2008 in Nagakute, **Japan** where 12 **youth from the village of France** **protected the forest** with the local people **(with SJ France).**

### So, we want to hear from you;

- 1) **Are you interested** to do it with us!?
- 2) Do you have any **possible local hosts**?  
If so, where, who and what kind of works?
- 3) Do you have any **possible groups to Japan**?  
If so, what kind of groups and plans?

Please don't hesitate to contact to;  
**Sayaka: [GW@nice1.gr.jp](mailto:GW@nice1.gr.jp)**

# Project 5: Other types of projects

NICE organizes many kinds of other activities mainly by its members!  
The following five activities are just a part of them (there are about 40 volunteers teams!)

## 5-1) World Tanabata Action

- Green the land & heart to stop climate change -

### a) Description:

This is a global common action to

1. **Plant trees** (or other actions to decrease CO<sub>2</sub>)
2. **Study/ discuss** on the climate change issue
3. **Write “my action”** on “Tanzaku” papers

Tanzaku papers are collected and **exhibited in the G8 Summit, the UNESCO Conference, etc.**  
It was started **by NICE in 2008** (co-organized with NVDA, CCIVS and CONCORDIA)/ collaborated with any NGOs & people of all over the world.

Tanabata is a Japanese old custom from the old, romantic tale and people write wishes on the Tanzaku papers and hang them on the bamboo trees in the night of 7<sup>th</sup> July every year!

### b) Aims:

- ☺ **Decrease CO<sub>2</sub> emission** by practical actions
- ☺ **Raise awareness** on climate change
- ☺ **Promote cooperation** among NGOs and people

### c) Results



Japan



India



G8 Summit



France

- ☺ In 2008-09, **48 NGOs in 34 countries** were registered and **16,587 persons planted 205,961 trees and 11,906 tanzaku papers** were collected,
- ☺ Tanzaku papers were partly **introduced at the G8 Summit** in 7-9 July in Hokkaido, Japan by the great efforts of **Special G8 Workcamp** by NICE!
- ☺ Tanzaku art was beautifully exhibited in the **ESD Seminar in UNESCO**, Paris in Sep. 2008.
- ☺ **Special Tanabata Workcamp** was organized in Paris, Nov.-Dec. 2009 to help organizing and also present at the UNESCO's NGO Conference.

## 5-2) Eco Sponge Action

- Protect the water & encourage the women -

### a) Description:

Eco sponge is made of **acryl** with which you **can wash most of dishes without washing soap** by its special function (no sanitation problem!).

It was started **by NICE in 2003** (International year of Freshwater) and have been **made/ used in many workcamps, local communities, schools, etc.** by the NGOs in the world. It is also one of two **official common actions of NVDA** for 2008-09.

From 2009, **women in the slam area of Hanoi, Vietnam** started making the sponges with the great help of SJV that are brought back by the Japanese vols. and sold in the festivals, seminars, etc. for **income generation** of those women.

### b) Aims:

- ☺ **Protect the river/ lake water and your health**
- ☺ **Support the life of disadvantaged women**
- ☺ **Save cost** to buy soap and **time** to wash dishes

### c) Results



Eco sponges



Selling in the festival



Woman in Hanoi



Her house on the river

- ☺ Since 2003, over 7,000 sponges were made and used by over 5,000 people of 10 countries (by **IIRC** Indonesia, **MOVE** Malaysia, **SJV** Vietnam, **INEX** Slovakia, **CONC** UK, **UNA** UK, **LEG** Italy, **CONC** France, **MCE** Mongolia, etc.)
- ☺ In the mountain village of **Borneo, Malaysia** where people flush water from daily life directly to the river, vols. promoted to use the sponges.
- ☺ **4 women** in the slum of Vietnam made **189 sponges** all of that were **sold** in Japan & Taiwan and generated about 600 US\$.

### 5-3) Notebook Action

- Bridge the children's friendship & cooperation -

#### a) Description:

Vols. deliver notebooks with messages from children who donate to children who needed.

#### b) Aims:

- ☺ Create exchange, friendship & global education between children in different nations
- ☺ Improve educational environment of the children in the receiving countries
- ☺ Promote actions of volunteers and new types of cooperation between 2 NGOs

#### c) Results



☺ NICE collected **265 notebooks** in 2006 from **3 elementary schools** in **Kobe** (where there was a huge earthquake in 95) which were **distributed** in the workcamp with IWC Indonesia in 2007, **Jogjakarta** that was hit by a big earthquake.

☺ In 2007, NICE collected **361 notebooks** and vols. carried to the schools and the orphanage in **Nepal** in cooperation of NIFC. Return messages were delivered back to all the Japanese children! It was done again with Nepal in **2008 and 2009**.

### 5-4) Inaka de Hataraki-Tai

- Revive the depopulated areas by youth power -

**Pilot project with Agricultural Ministry** (NICE was selected as one of 20 NPOs for this project) to send **10 youth to 5 farming villages** of Japan for **6-9 months** who coordinate the workcamps & other voluntary projects, find the hidden treasure to be **introduced on the internet shop**, etc.

With the strong links with these 5 villages all of which have hosted various types of workcamps, NICE tries to **deepen development plan** in each place and also promote **networking different local partners** by the meetings and mutual visits. The results were quite positive in 2009!



### 5-5) Social service classes

- Organize the high school classes in Tokyo -

Since 2007, all **high schools in Tokyo** have a new subject named "Social Service" which are mainly **mandated to the selected NPOs** including NICE. We mainly organize **environmental protection and global cooperation workshops** such as **making eco sponges** for the villages of Asia, as well as speaking workcamp experience.

In 2009, NICE run classes for **22 times in 12 schools** with involving **3,656 students and 163 volunteers** of NICE members. We generally get **quite positive feedback and impact** from the schools and students. NICE also conducts three different kind of classes in the university in Tokyo.



### 5-6) "Citizen Cabinet"

- Advocacy through the NGO networks -

A new government of Japan wants to strengthen partnership with NPOs/ NGOs, so a network called Citizen Cabinet was founded in Jan. 2010 by over 400 NPO activists. President of NICE is a "Foreign Minister" to coordinate the international policies and actively proposes AVS (Asian Voluntary Service) and Long Term Workcamps to revive the forests and fields.



### <20 Years Anniversary! >

NICE became 20 years old on 04 Feb. 2010 and appreciates to all of partners to have worked together (including 52 partners all over the world which gives messages only in 2 days request!).

The special forum and party was held in Tokyo on 06-07 Feb. where **259 persons including 42 local partner organizers** celebrated together!!

